



August 26, 2014

TO: LOCSO Board of Directors
FROM: Margaret Falkner, Utility Compliance Technician III *MLF*
SUBJECT: **Agenda Item 9B – 09/04/2014 Board Meeting**
 Utilities Department Report for July 2014

President
 Craig V. Baltimore

Vice President
 R. Michael Wright

Directors
 Leonard A. Moothart
 Marshall E. Ochylski
 Jon-Erik G. Storm

General Manager
 Kathy A. Kivley

Temporary District Accountant
 Michael L. Doyel

Fire Chief
 Robert Lewin

Battalion Chief
 Phill Veneris

Mailing Address:
 P.O. Box 6064
 Los Osos, CA 93412

Offices:
 2122 9th Street, Suite 102
 Los Osos, CA 93402

Phone: 805/528-9370
FAX: 805/528-9377

www.losososcsd.org

WATER PRODUCTION

The total production for the month of **July 2014** was approximately **21 million gallons (MG)** this equates to an average daily demand of 676,800 gallons. This represents a **decrease** in production from last year by approximately **8%**.

Fifty-seven percent of the service area received bills for approximately **15.3 MG** consumption for the period **June 11, 2014 through August 12, 2014**. This generated **\$187,468** in revenue. This represents approximately a **14%** decrease in consumption and approximately **27%** increase in revenue when compared to last year at this time.

An annual adjustment of the water rates went into effect July 1, 2014 in accordance with Resolution 2012-31. There was a 1.86% increase based on the Consumer Price Index. Staff contacted the water billing vendor for an explanation on pro-rated bills. The billing software is working correctly. Curious customers may contact the District and staff will explain how to calculate their pro-rated bill. Attached is a revised rate sheet for your reference.

PRODUCTION AND RUNTIME HOURS BY WELL SITE

Below are two tables that break down the production by well site and the runtime on the pump motor for the month of July 2014. Last year's totals are included for comparison:

Production (MG) July	2014	2013
Palisades	4.7600	8.7280
3rd Street	3.2405	2.8346
El Moro	6.3941	5.0378
10th Street	5.7082	4.3968
South Bay (lower)	0.8765	1.7814
South Bay (upper)	0.0000	0.0000
TOTAL:	20.9793	22.7786

Runtime (Hours) July	2014	2013
Palisades	141.8	244.7
3rd St	732.4	654.8
El Moro	310.3	239.2
10th St	311.5	240.3
South Bay (lower)	735.6	718.6
South Bay (upper)	0.0	0.0
TOTAL:	2231.6	2097.6

Please refer to the attached July 2014 "Well Log Summary" for more data regarding production, runtime hours, chemical usage, soundings, and alarms.

CALIFORNIA STATE OF EMERGENCY DUE TO DROUGHT

On January 17, 2014, Governor Brown declared an emergency due to drought. He has called on all Californians to restrain water use. Attached to this report are graphs with tables which provide information on the District's water well depths.

WATER CONSERVATION

Staff attended the Baywood Park Farmer's Market on Santa Maria Avenue on August 18, 2014. Many fixtures were given away to people in attendance. It was a very busy day. A water conservation banner is on display on the fence at the 10th Street well and tank site. Weekly water conservation messages continue to be placed on the Rotary electronic message board at the corner of South Bay Blvd. and Los Osos Valley Road. The marketing firm, Barnett Cox & Associates, was selected to lead the water conservation plan outreach program. Mr. Cox attended the Utilities Advisory Committee meeting on August 13th and received additional ideas from the public and committee members. Water conservation messages are distributed with water bills. The LOCSD web site has a page dedicated to water conservation. More information is available at: <http://www.losososcsd.org/cm/utilities/water-conservation.html>

UTILITIES DEPARTMENT OPERATIONS AND MAINTENANCE FOR WATER SYSTEM

During the month of July 2014, crew provided weekly water sampling for water permit compliance, read water meters for billing, and performed monthly well soundings. They relocated a service line that was in conflict with a storm water project of the County. They replaced several service lines and repaired leaks.

Staff submitted the monthly monitoring report to the State Water Resource Control Board Drinking Water Division for July 2014 with no violations noted.

DRAINAGE WDID # 3 40M2000133

The General National Pollutant Discharge Elimination System (NPDES) Permit for storm water discharges for small Municipal Separate Storm Sewer Systems (MS4) is effective July 1, 2013. District staff has been working with staff at the Regional Water Quality Control Board on the current permit. Our annual report is due October 15, 2014 which covers the fiscal year July 2013 through June 2014.

BAYRIDGE ESTATES WDID# 3 401027001

Crews continue monitoring and groundskeeping. Once connected to the Los Osos Wastewater Project, the District crews will no longer maintain the septic system.

VISTA DE ORO WDID# 3 401024001

Crews continue monitoring and groundskeeping. Once connected to the Los Osos Wastewater Project, the District crews will no longer maintain the septic system.

RECOMMENDATION

Staff encourages the Board to ask any questions they may have with regard to the aforementioned report or any other related item that may be listed separately as an agenda item.

Attachments



LOS OSOS COMMUNITY SERVICES DISTRICT BI-MONTHLY WATER RATES AS OF 7/1/2014

MINIMUM CHARGE		CCF	AMOUNT	CCF	AMOUNT	CCF	AMOUNT
CCF	AMOUNT						
0 units	\$45.76	38	\$251.16	81	\$560.76	124	\$870.36
1.63/CCF		39	\$258.36	82	\$567.96	125	\$877.56
1	\$47.39	40	\$265.56	83	\$575.16	126	\$884.76
2	\$49.02	41	\$272.76	84	\$582.36	127	\$891.96
3	\$50.65	42	\$279.96	85	\$589.56	128	\$899.16
4	\$52.28	43	\$287.16	86	\$596.76	129	\$906.36
5	\$53.91	44	\$294.36	87	\$603.96	130	\$913.56
ADDITIONAL \$3.07/CCF		45	\$301.56	88	\$611.16	131	\$920.76
6	\$56.98	46	\$308.76	89	\$618.36	132	\$927.96
7	\$60.05	47	\$315.96	90	\$625.56	133	\$935.16
8	\$63.12	48	\$323.16	91	\$632.76	134	\$942.36
9	\$66.19	49	\$330.36	92	\$639.96	135	\$949.56
10	\$69.26	50	\$337.56	93	\$647.16	136	\$956.76
ADDITIONAL \$5.23/CCF		51	\$344.76	94	\$654.36	137	\$963.96
11	\$74.49	52	\$351.96	95	\$661.56	138	\$971.16
12	\$79.72	53	\$359.16	96	\$668.76	139	\$978.36
13	\$84.95	54	\$366.36	97	\$675.96	140	\$985.56
14	\$90.18	55	\$373.56	98	\$683.16	141	\$992.76
15	\$95.41	56	\$380.76	99	\$690.36	142	\$999.96
16	\$100.64	57	\$387.96	100	\$697.56	143	\$1,007.16
17	\$105.87	58	\$395.16	101	\$704.76	144	\$1,014.36
18	\$111.10	59	\$402.36	102	\$711.96	145	\$1,021.56
19	\$116.33	60	\$409.56	103	\$719.16	146	\$1,028.76
20	\$121.56	61	\$416.76	104	\$726.36	147	\$1,035.96
ADDITIONAL \$7.20/CCF		62	\$423.96	105	\$733.56	148	\$1,043.16
21	\$128.76	63	\$431.16	106	\$740.76	149	\$1,050.36
22	\$135.96	64	\$438.36	107	\$747.96	150	\$1,057.56
23	\$143.16	65	\$445.56	108	\$755.16	151	\$1,064.76
24	\$150.36	66	\$452.76	109	\$762.36	152	\$1,071.96
25	\$157.56	67	\$459.96	110	\$769.56	153	\$1,079.16
26	\$164.76	68	\$467.16	111	\$776.76	154	\$1,086.36
27	\$171.96	69	\$474.36	112	\$783.96	155	\$1,093.56
28	\$179.16	70	\$481.56	113	\$791.16	156	\$1,100.76
29	\$186.36	71	\$488.76	114	\$798.36	157	\$1,107.96
30	\$193.56	72	\$495.96	115	\$805.56	158	\$1,115.16
31	\$200.76	73	\$503.16	116	\$812.76	159	\$1,122.36
32	\$207.96	74	\$510.36	117	\$819.96	160	\$1,129.56
33	\$215.16	75	\$517.56	118	\$827.16	161	\$1,136.76
34	\$222.36	76	\$524.76	119	\$834.36	162	\$1,143.96
35	\$229.56	77	\$531.96	120	\$841.56	163	\$1,151.16
36	\$236.76	78	\$539.16	121	\$848.76	164	\$1,158.36
37	\$243.96	79	\$546.36	122	\$855.96	165	\$1,165.56
		80	\$553.56	123	\$863.16	166	\$1,172.76

Conversion:

CCF is defined as 100 cubic feet which is equal to 748 gallons

Usage x 748 gallons ÷ 60 = Average Daily Use (gallons)

JULY 2014	8th St./ El Moro Well	3rd St./ Bayside Well	10th St. Well	South Bay Well	South Bay Upper Well	Palisades Well	All Wells TOTAL	Last Years TOTAL	Percent% Differential
Total Gallons Produced, Mgal	6.3941	3.2405	5.7082	0.8765	0.0000	4.7600	20.9793	22.7786	-7.90%
Average Daily Flow, Mgal							0.6768	0.7348	
Total Gallons to Waste (Filter Backwash), Mgal	0.0328			0.0000			0.0328	0	
Total Gallons to Waste (System Flushing), Mgal							0.0000	0	
Distribution System Losses (Water Line Breaks), Mgal							0.0000	0.0011	
Total Gallons Adjusted, Mgal	6.3613			0.8765			20.9465	22.7775	-8.04%
Pump Runtime, total hours	310.3	732.4	311.5	735.6		141.8	2231.6	2097.6	6.00%
Daily Avg. Runtime, hours/day	10.0	23.6	10.0	23.7		4.6			
Energy Used, kWatts	12364	5823	12668	7623		10999	49477	53529	-7.57%
Eff. Ratio, kWatts/hr	39.85	7.95	40.67	10.36		77.57			
Chlorine Used, total gallons	110.8	45.6	37.7	20.4		41.1	255.7	225.4	13.44%
Aqua Mag, pounds	90.8		66.4	0.0		38.6	195.8	189.4	3.38%
Static water level, ft.	41.10	7.30	159.30	129.30	90.10	101.60			
Pump water level, ft.	149.70	55.40	251.30	159.40	0.00	263.50			
Draw-down level, ft.	108.60	48.10	92.00	30.10	0.00	161.90			
Gallons per minute	350	73	312	28	0	551			
Pressure, psi	92	84	34	62	0	80			
Alarm Events									
YES / NO	YES	YES	NO	NO	NO	NO			
Type of event									
Well Failure							0		
Power Failure							0		
Low Chlorine	3	4					7		
Other:							0		
Total number alarms	3	4	0	0	0	0	7	1	600.00%

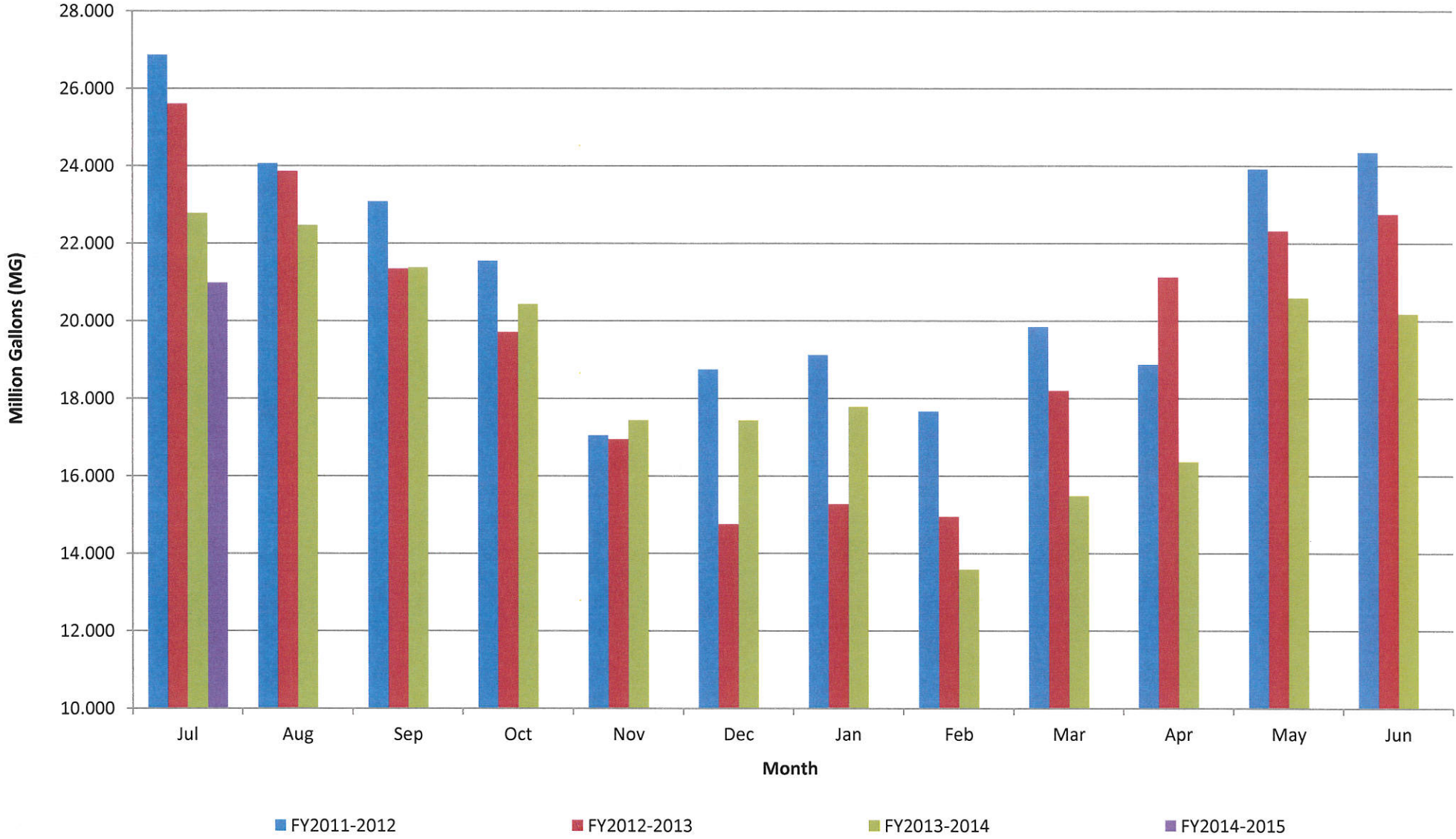
LOCSD Water Data

Water Production Data in Million Gallons

	FY 11-12	FY 12-13	FY 13-14	FY 14-15
Jul	26.868	25.600	22.779	20.979
Aug	24.064	23.862	22.470	
Sep	23.086	21.340	21.380	
Oct	21.543	19.708	20.431	
Nov	17.046	16.939	17.436	
Dec	18.745	14.747	17.431	
Jan	19.117	15.268	17.780	
Feb	17.662	14.940	13.584	
Mar	19.843	18.193	15.476	
Apr	18.873	21.118	16.354	
May	23.914	22.310	20.591	
Jun	24.347	22.743	20.179	
TOTAL	255.107	236.767	225.890	20.979

Consumption is billed for a two month period every month.
Revenue is based on gallons billed - not cash received.
Production is recorded daily.

Historical to Present LOCS D Well Production Data

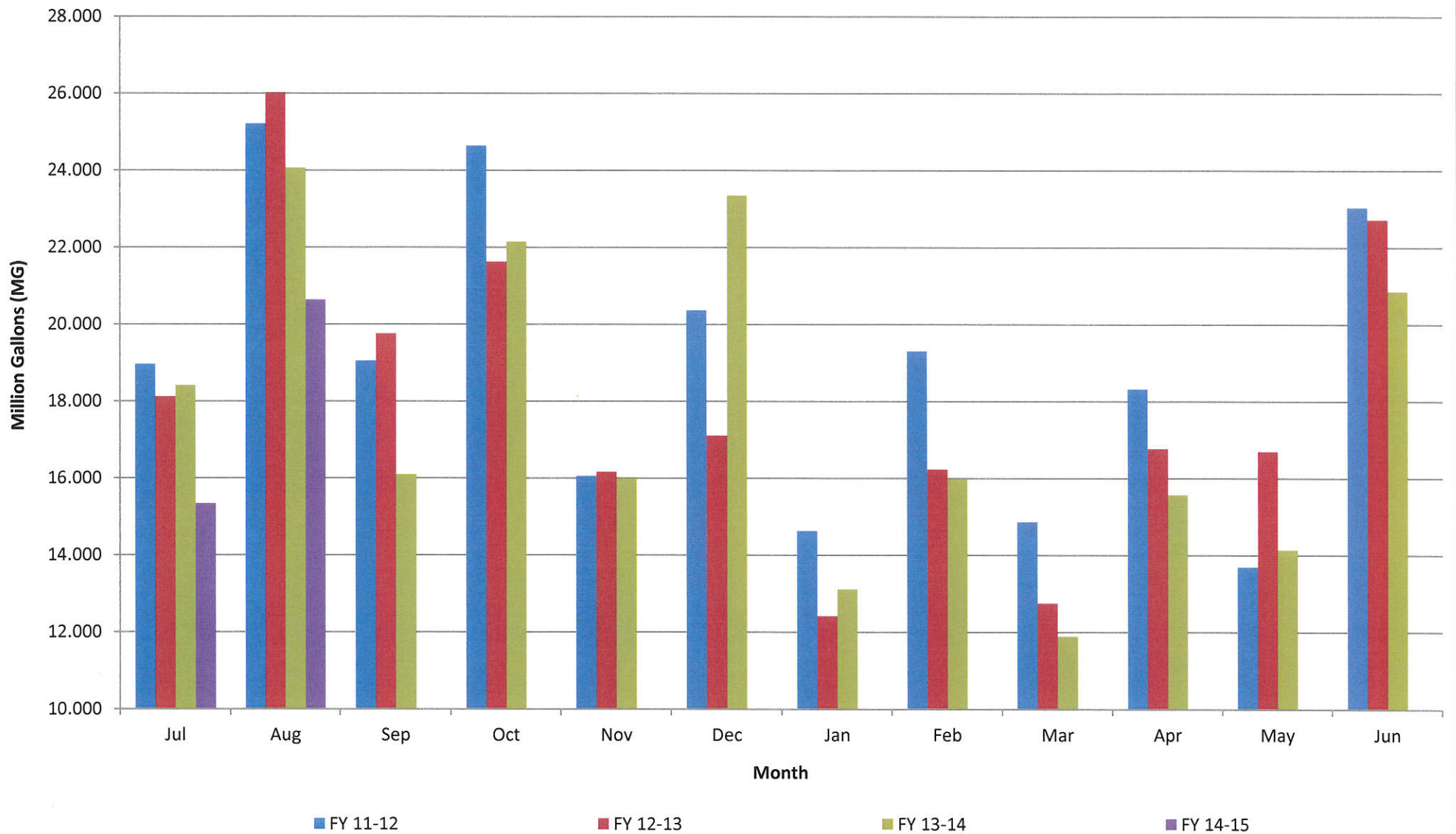


LOCSD Water Data

Water Consumption Data in Million Gallons						
% of Service Area	Billing Period		FY 11-12	FY 12-13	FY 13-14	FY 14-15
43	5/11 to 7/10	Jul	18.950	18.110	18.402	15.330
57	6/11 to 8/10	Aug	25.210	26.006	24.061	20.627
43	7/11 to 9/10	Sep	19.044	19.748	16.087	
57	8/11 to 10/10	Oct	24.636	21.617	22.142	
43	9/11 to 11/10	Nov	16.048	16.155	15.994	
57	10/11 to 12/10	Dec	20.355	17.096	23.342	
43	11/11 to 1/10	Jan	14.623	12.406	13.105	
57	12/11 to 2/10	Feb	19.294	16.223	15.969	
43	1/11 to 3/10	Mar	14.858	12.737	11.886	
57	2/11 to 4/10	Apr	18.313	16.756	15.559	
43	3/11 to 5/10	May	13.685	16.686	14.131	
57	4/11 to 6/10	Jun	23.029	22.709	20.852	
		TOTAL	228.044	216.249	211.530	35.957

Consumption is billed for a two month period every month.
 Revenue is based on gallons billed - not cash received.
 Production is recorded daily.

Historical to Present LOCS D Water Consumption

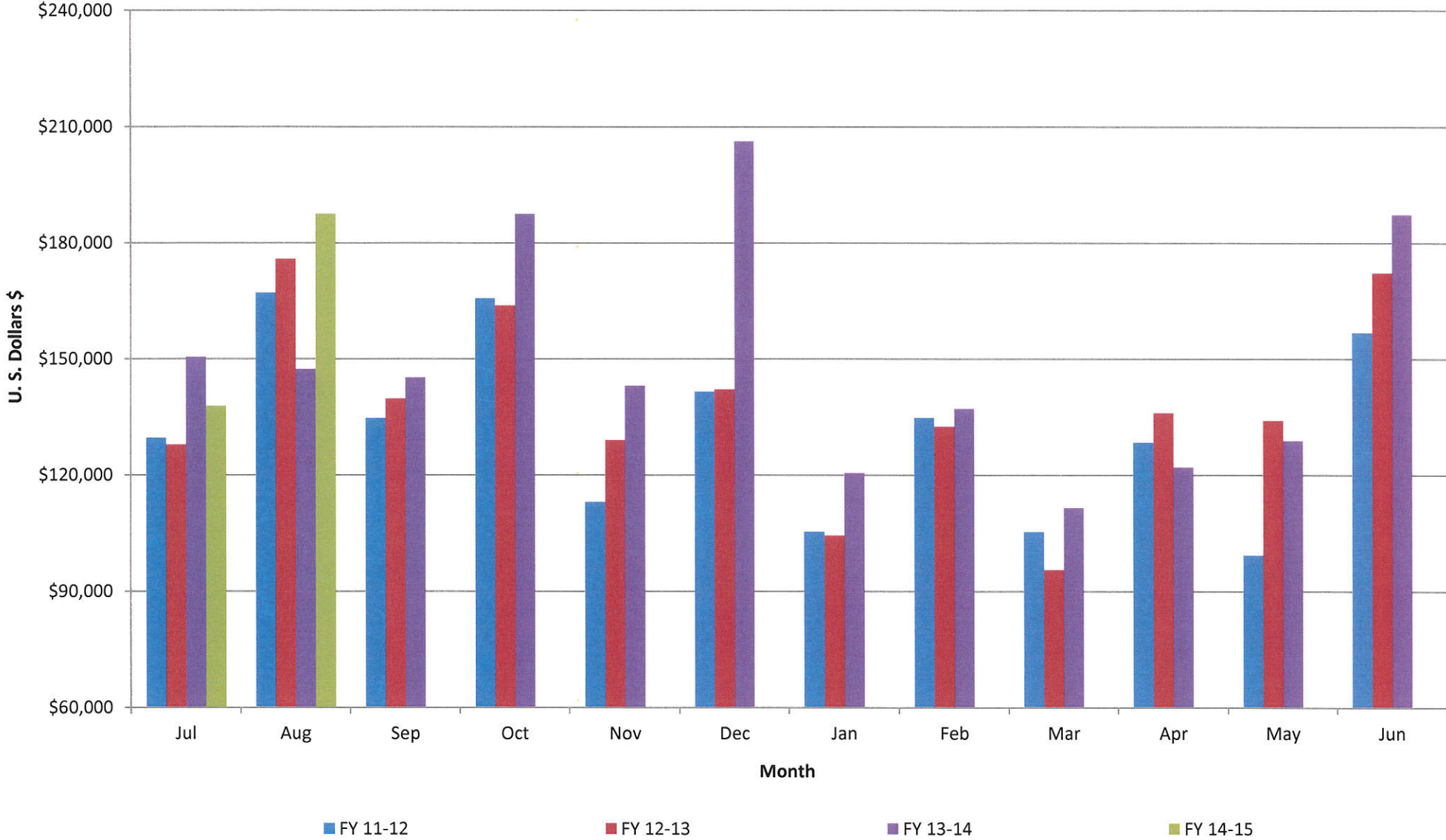


LOCSD Water Data

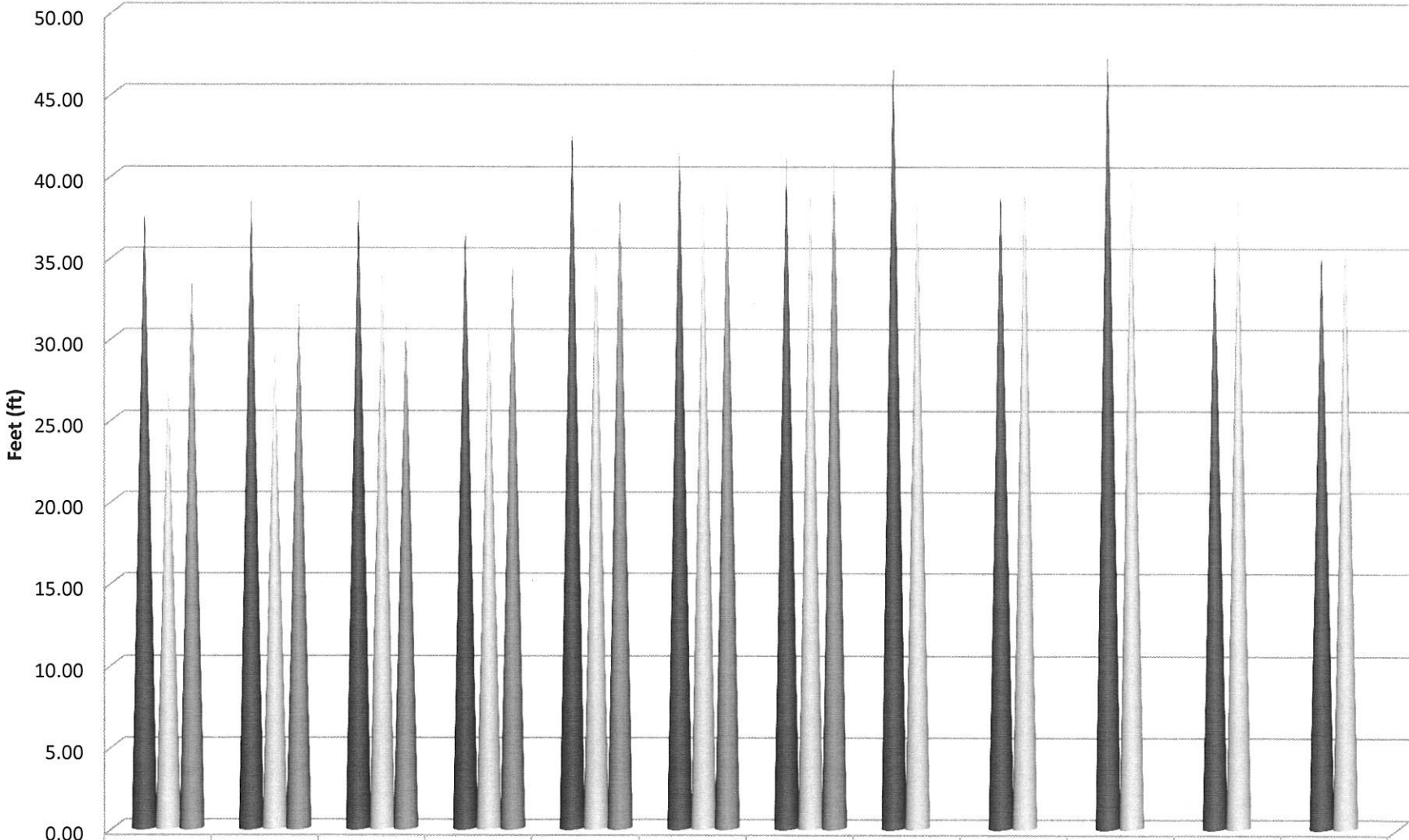
Water Revenue Data						
% of Service Area	Billing Period		FY 11-12	FY 12-13	FY 13-14	FY 14-15
43	5/11 to 7/10	Jul	\$129,524.46	\$127,737.70	\$150,401.90	\$137,752.98
57	6/11 to 8/10	Aug	\$167,062.07	\$175,798.70	\$147,246.54	\$187,468.02
43	7/11 to 9/10	Sep	\$134,650.62	\$139,628.43	\$145,135.28	
57	8/11 to 10/10	Oct	\$165,624.63	\$163,698.98	\$187,431.78	
43	9/11 to 11/10	Nov	\$113,044.46	\$128,918.55	\$143,029.03	
57	10/11 to 12/10	Dec	\$141,492.06	\$142,026.32	\$206,187.91	
43	11/11 to 1/10	Jan	\$105,371.44	\$104,328.08	\$120,500.40	
57	12/11 to 2/10	Feb	\$134,692.14	\$132,433.64	\$137,045.65	
43	1/11 to 3/10	Mar	\$105,313.67	\$95,487.96	\$111,475.31	
57	2/11 to 4/10	Apr	\$128,368.97	\$135,947.81	\$121,943.68	
43	3/11 to 5/10	May	\$99,287.66	\$133,939.00	\$128,784.61	
57	4/11 to 6/10	Jun	\$156,744.35	\$172,139.37	\$187,230.13	
		TOTAL	\$1,581,176.53	\$1,652,084.54	\$1,786,412.22	\$325,221.00

Consumption is billed for a two month period every month.
 Revenue is based on gallons billed - not cash received.
 Production is recorded daily.

Historical to Present LOCSD Water Revenue

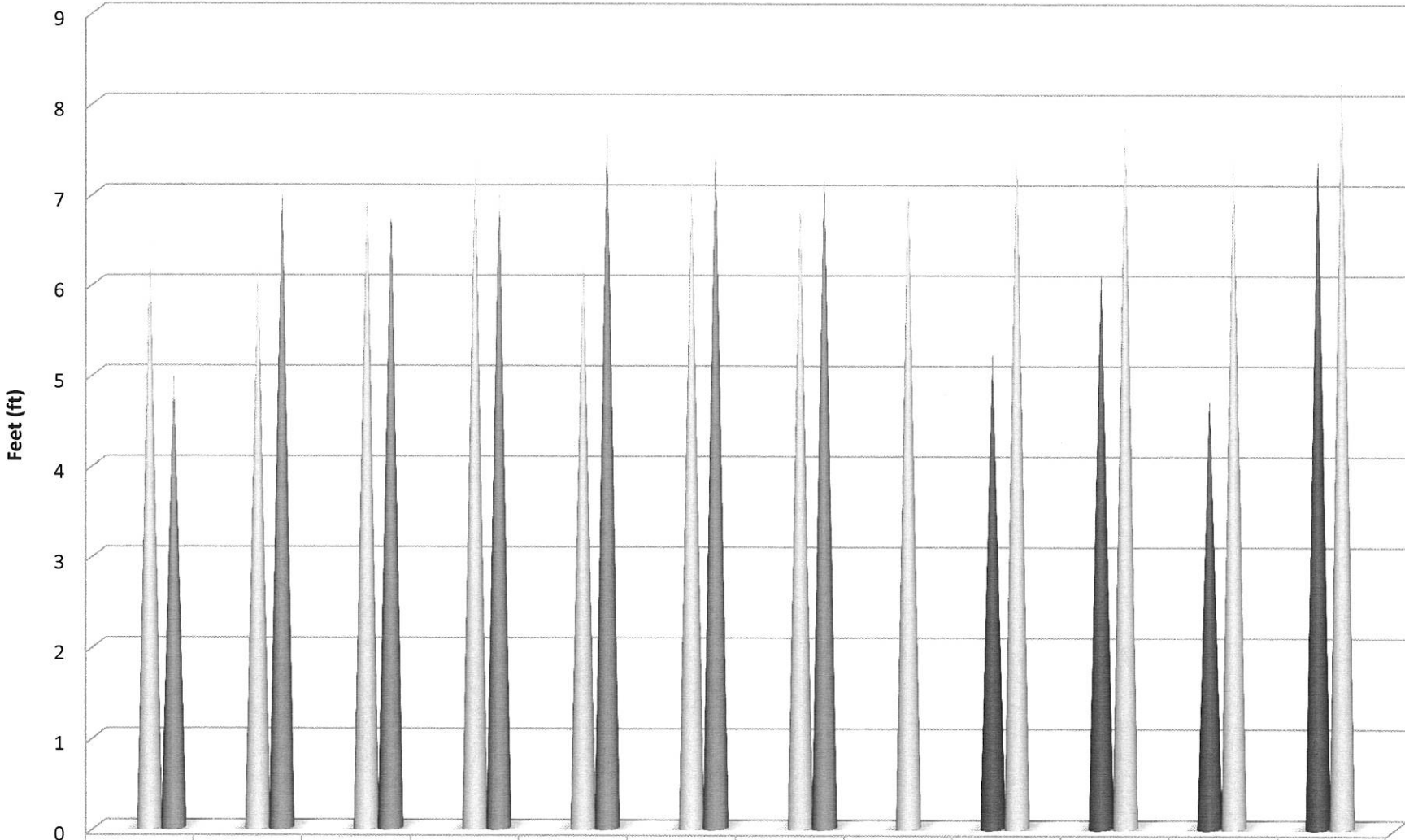


8th Street Well Static Water Levels



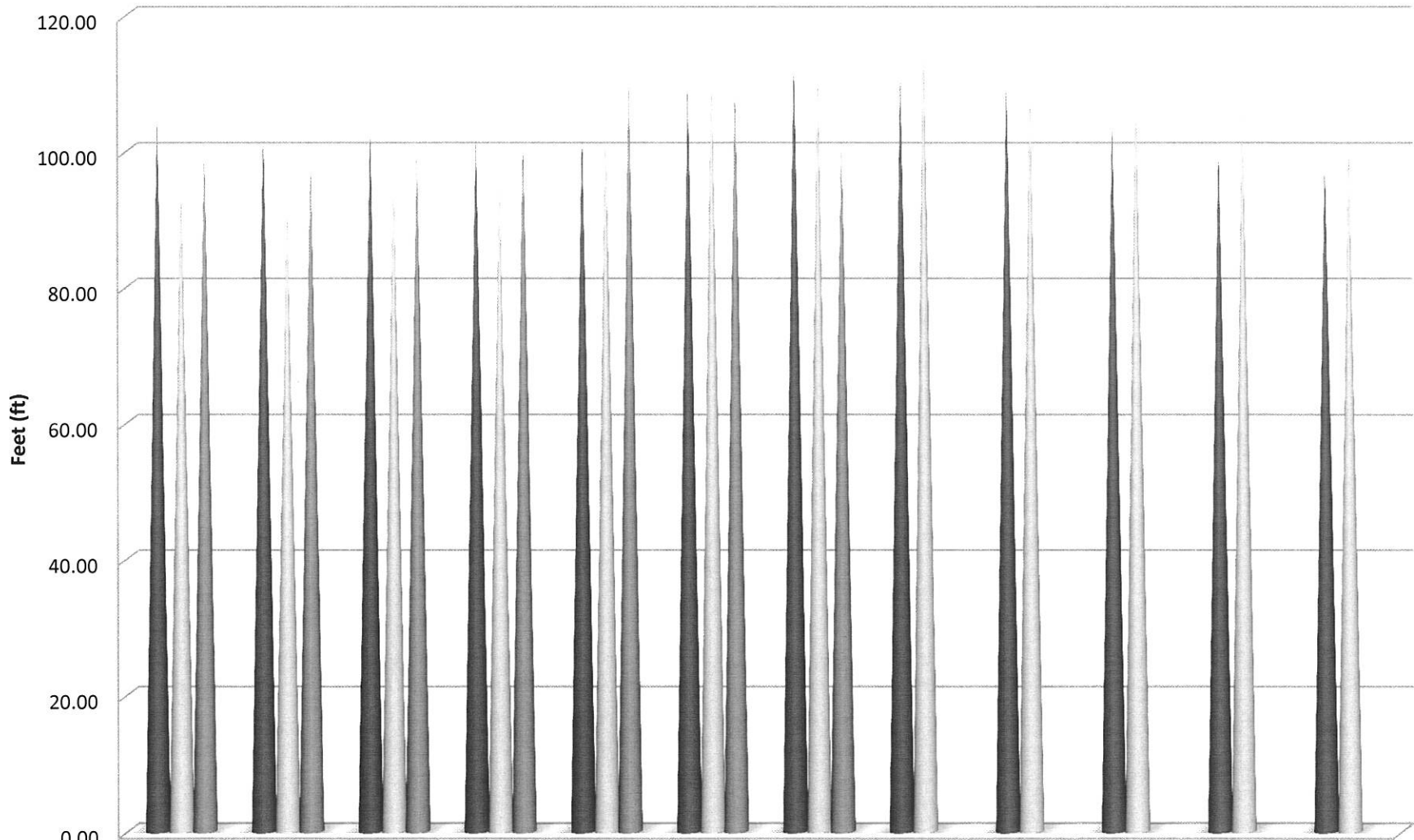
	Jan	Feb	Mar	Apr	May	Jun	Jul	Aug	Sep	Oct	Nov	Dec
■ 2012	38.40	38.90	38.90	37.20	43.45	41.90	41.40	47.60	39.70	48.10	36.20	35.80
■ 2013	28.00	29.80	34.80	32.50	37.20	39.00	39.80	39.80	41.10	41.30	39.50	37.00
■ 2014	34.20	32.50	31.30	35.10	39.40	39.70	41.10					

3rd Street Well Static Water Levels



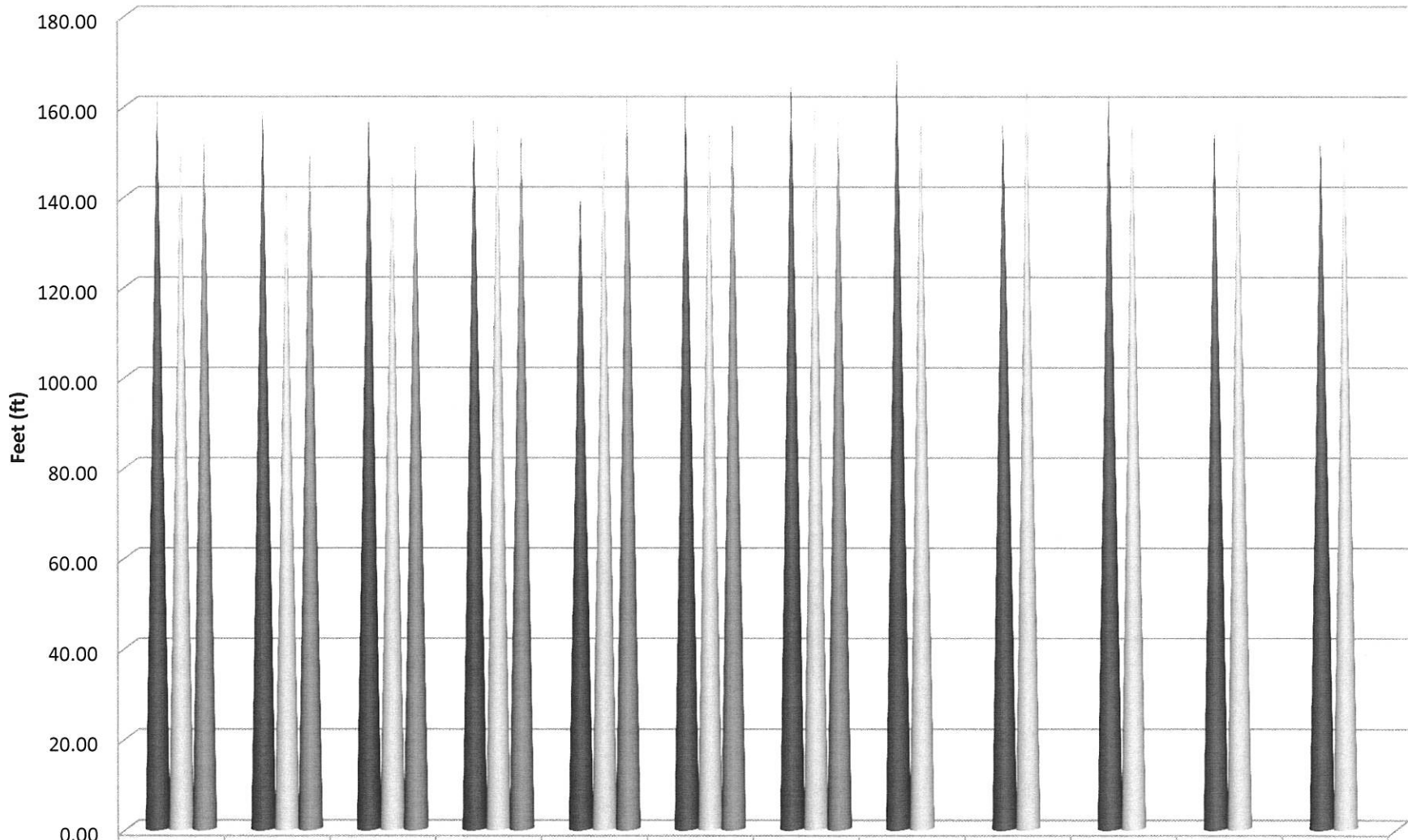
	Jan	Feb	Mar	Apr	May	Jun	Jul	Aug	Sep	Oct	Nov	Dec
■ 2012									5.25	6.20	4.80	7.50
■ 2013	6.50	6.30	7.10	7.50	6.50	7.30	7.00	7.30	7.70	7.90	7.50	8.45
■ 2014	5.00	7.10	6.90	7.10	7.70	7.55	7.30					

Palisades Well Static Water Levels



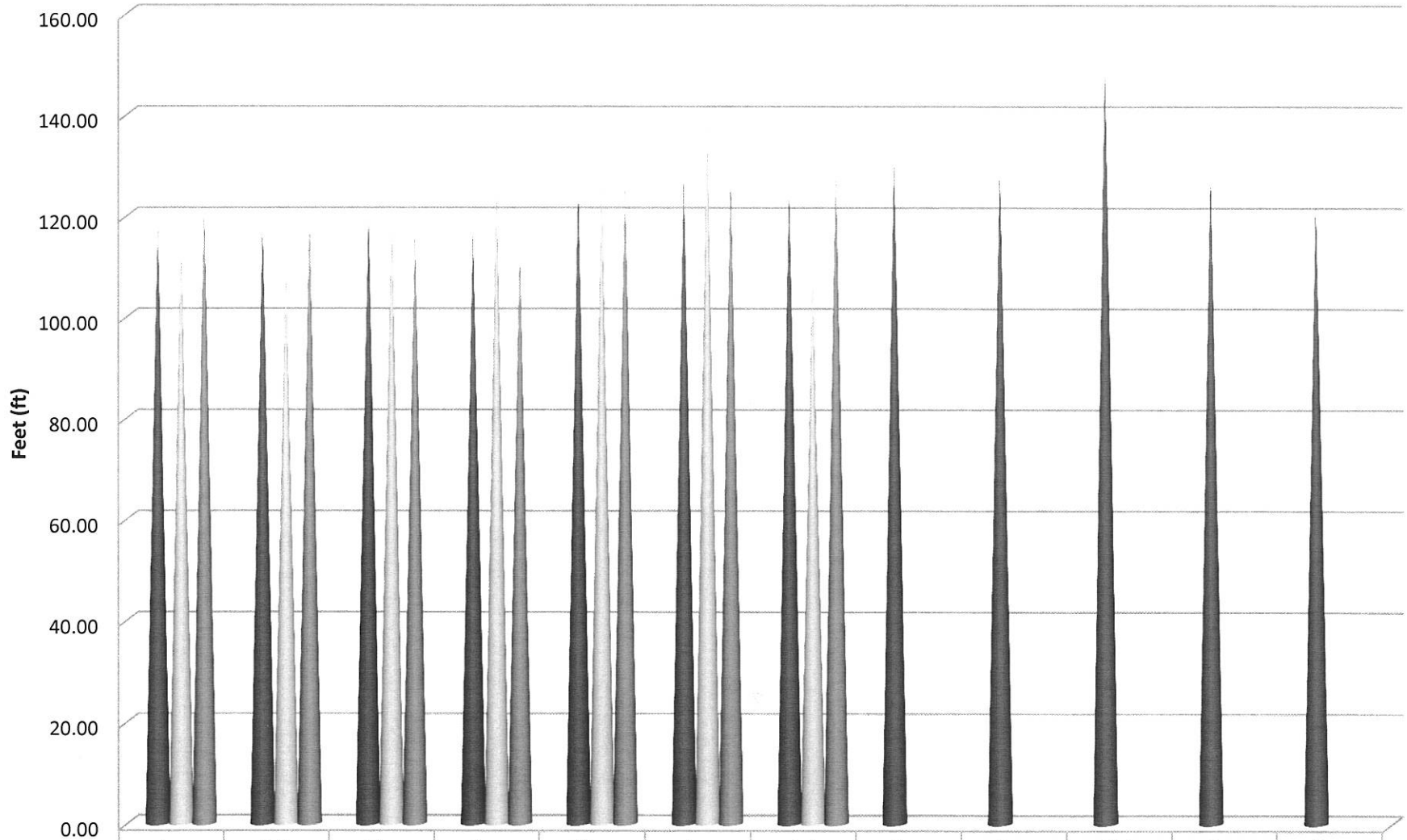
	Jan	Feb	Mar	Apr	May	Jun	Jul	Aug	Sep	Oct	Nov	Dec
■ 2012	105.00	102.60	103.50	102.30	103.10	109.30	113.80	111.40	110.30	104.60	100.90	98.50
■ 2013	97.20	92.30	97.90	96.20	104.90	113.60	112.60	118.70	109.80	109.90	106.50	101.35
■ 2014	100.40	98.60	99.90	102.10	109.85	110.3	101.60					

10th Street Well Static Water Levels



	Jan	Feb	Mar	Apr	May	Jun	Jul	Aug	Sep	Oct	Nov	Dec
■ 2012	162.85	160.60	159.90	158.80	142.50	163.50	168.00	171.90	158.80	164.60	157.40	154.60
■ 2013	157.00	144.90	152.90	161.60	156.80	161.30	163.90	164.80	168.40	164.30	161.20	157.45
■ 2014	156.20	152.40	152.60	156.80	162.90	160.15	159.30					

South Bay Lower Well Static Water Levels



	Jan	Feb	Mar	Apr	May	Jun	Jul	Aug	Sep	Oct	Nov	Dec
■ 2012	118.60	118.20	120.30	117.10	125.70	127.10	126.20	131.20	129.70	149.60	129.00	122.60
■ 2013	117.25	109.90	121.60	127.60	127.50	139.00	108.60					
■ 2014	122.10	118.90	116.80	112.90	126.00	128.50	129.30					