



September 15, 2014

TO: LOCSD Board of Directors
FROM: Margaret Falkner, Utility Compliance Technician III
SUBJECT: **Agenda Item 9B – 10/02/2014 Board Meeting**
Utilities Department Report for August 2014

President
Craig V. Baltimore

Vice President
R. Michael Wright

Directors
Leonard A. Moothart
Marshall E. Ochylski
Jon-Erik G. Storm

General Manager
Kathy A. Kivley

Temporary District Accountant
Michael L. Doyel

Fire Chief
Robert Lewin

Battalion Chief
Phill Veneris

Mailing Address:
P.O. Box 6064
Los Osos, CA 93412

Offices:
2122 9th Street, Suite 102
Los Osos, CA 93402

Phone: 805/528-9370
FAX: 805/528-9377

WATER PRODUCTION

The total production for the month of **August 2014** was approximately **19.6 million gallons (MG)** this equates to an average daily demand of 632,000 gallons. This represents a **decrease** in production from last year by approximately **13%**.

Forty-three percent of the service area received bills for approximately **16.0 MG** consumption for the period **July 10, 2014 through September 12, 2014**. This generated **\$187,468** in revenue. This represents approximately a **0.6%** decrease in consumption and approximately **1.8%** increase in revenue when compared to last year at this time.

PRODUCTION AND RUNTIME HOURS BY WELL SITE

Below are two tables that break down the production by well site and the runtime on the pump motor for the month of August 2014. Last year's totals are included for comparison:

Production (MG) August	2014	2013
Palisades	4.9650	8.7510
3rd Street	3.1665	3.1096
El Moro	4.8336	5.4921
10th Street	6.2541	4.5456
South Bay (lower)	0.3739	0.5716
South Bay (upper)	0.0000	0.0000
TOTAL:	19.5931	22.4699

Runtime (Hours) August	2014	2013
Palisades	148.8	252.5
3rd St	715.1	715.9
El Moro	237.6	260.9
10th St	342.0	246.0
South Bay (lower)	300.4	232.8
South Bay (upper)	0.0	0.0
TOTAL:	1743.9	1708.1

Please refer to the attached August 2014 "Well Log Summary" for more data regarding production, runtime hours, chemical usage, soundings, and alarms.

CALIFORNIA STATE OF EMERGENCY DUE TO DROUGHT

On January 17, 2014, Governor Brown declared an emergency due to drought. He has called on all Californians to restrain water use. Attached to this report are graphs with tables which provide information on the District's water well depths.

WATER CONSERVATION

On September 4, 2014, the following items regarding water conservation were approved and adopted.

1. The Water Shortage Contingency Plan was adopted at Stage II with the adoption of Resolution 2014-18
2. The Outdoor Water Conservation Program was approved with the adoption of Resolution 2014-22;
3. A contract with Barnett Cox & Associates was approved and the General Manager was authorized to execute for a Dual Phase Public Outreach Campaign for water conservation

A Press Release was done on September 5, 2014 referencing the Water Shortage Contingency Plan. A copy will be inserted with water bills for the next two cycles. A link is available on the District website as well as on the water conservation page listed below.

Required reports have been filed with the County of San Luis Obispo and the State Water Resources Control Board.

Staff will be attending the Farmers Market on Monday September 29, 2014 distributing water conservation materials and fixtures to the public. Messages continue to be displayed on the Rotary sign at the corner of Los Osos Valley Road and South Bay Boulevard.

More information is available at: <http://www.losososcscd.org/cm/utilities/water-conservation.html>

UTILITIES DEPARTMENT OPERATIONS AND MAINTENANCE FOR WATER SYSTEM

During the month of August 2014, crew provided weekly water sampling for water permit compliance, read water meters for billing, and performed monthly well soundings. They continued the meter replacement program, and fire hydrant maintenance. They replaced several service lines and repaired leaks.

Staff submitted the monthly monitoring report to the State Water Resource Control Board Drinking Water Division for August 2014 with no violations noted.

DRAINAGE WDID # 3 40M2000133

The District complies with the General National Pollutant Discharge Elimination System (NPDES) Permit for storm water discharges for small Municipal Separate Storm Sewer Systems (MS4). Our annual report is due October 15, 2014 which covers the fiscal year July 2013 through June 2014.

BAYRIDGE ESTATES WDID# 3 401027001

Crews continue monitoring and groundskeeping. Once connected to the Los Osos Wastewater Project, the District crews will no longer maintain the septic system.

VISTA DE ORO WDID# 3 401024001

Crews continue monitoring and groundskeeping. Once connected to the Los Osos Wastewater Project, the District crews will no longer maintain the septic system.

RECOMMENDATION

Staff encourages the Board to ask any questions they may have with regard to the aforementioned report or any other related item that may be listed separately as an agenda item.

Attachments

AUGUST 2014	8th St./ EI Moro Well	3rd St./ Bayside Well	10th St. Well	South Bay Well	South Bay Upper Well	Palisades Well	All Wells TOTAL	Last Years TOTAL	Percent% Differential
Total Gallons Produced, Mgal	4.8336	3.1665	6.2541	0.3739	0.0000	4.9650	19.5931	22.4699	-12.80%
Average Daily Flow, Mgal							0.6320	0.7248	
Total Gallons to Waste (Filter Backwash), Mgal	0.0000			0.0000			0.0000	0.0375	
Total Gallons to Waste (System Flushing), Mgal							0.0000	0.0000	
Distribution System Losses (Water Line Breaks), Mgal							0.0000	0.0012	
Total Gallons Adjusted, Mgal	4.8336			0.3739			19.5931	22.4312	-12.65%
Pump Runtime, total hours	237.6	715.1	342.0	300.4		148.8	1743.9	1708.1	2.05%
Daily Avg. Runtime, hours/day	7.7	23.1	11.0	9.7		4.8			
Energy Used, kWatts	9364	5686	13557	3227		11493	43327	49597	-12.64%
Eff. Ratio, kWatts/hr	39.41	7.95	39.64	10.74		77.24			
Chlorine Used, total gallons	67.5	44.2	37.1	8.9		45.3	203.1	229.8	-11.63%
Aqua Mag, pounds	79.2		80.2	0.0		41.8	201.2	205.2	-1.95%
Static water level, ft.	40.70	5.90	171.30	125.60	90.30	100.05	8th St./EI Moro Well off since 8/25/2014 due to electrical problems. South Bay lower out of service since 8/15/14.		
Pump water level, ft.	145.60	54.10	245.60	0.00	0.00	256.80			
Draw-down level, ft.	104.90	48.20	74.30	0.00	0.00	156.75			
Gallons per minute	341	73	331	0	0	564			
Pressure, psi	98	84	42	0	0	84			
Alarm Events									
YES / NO	YES	YES	YES	YES	NO	YES	Increased alarm activity due to electrical problems.		
Type of event									
Well Failure							0		
Power Failure							0		
Low Chlorine	4			1			5		
Other:	1	4	8			3	16		
Total number alarms	5	4	8	1	0	3	21	7	200.00%

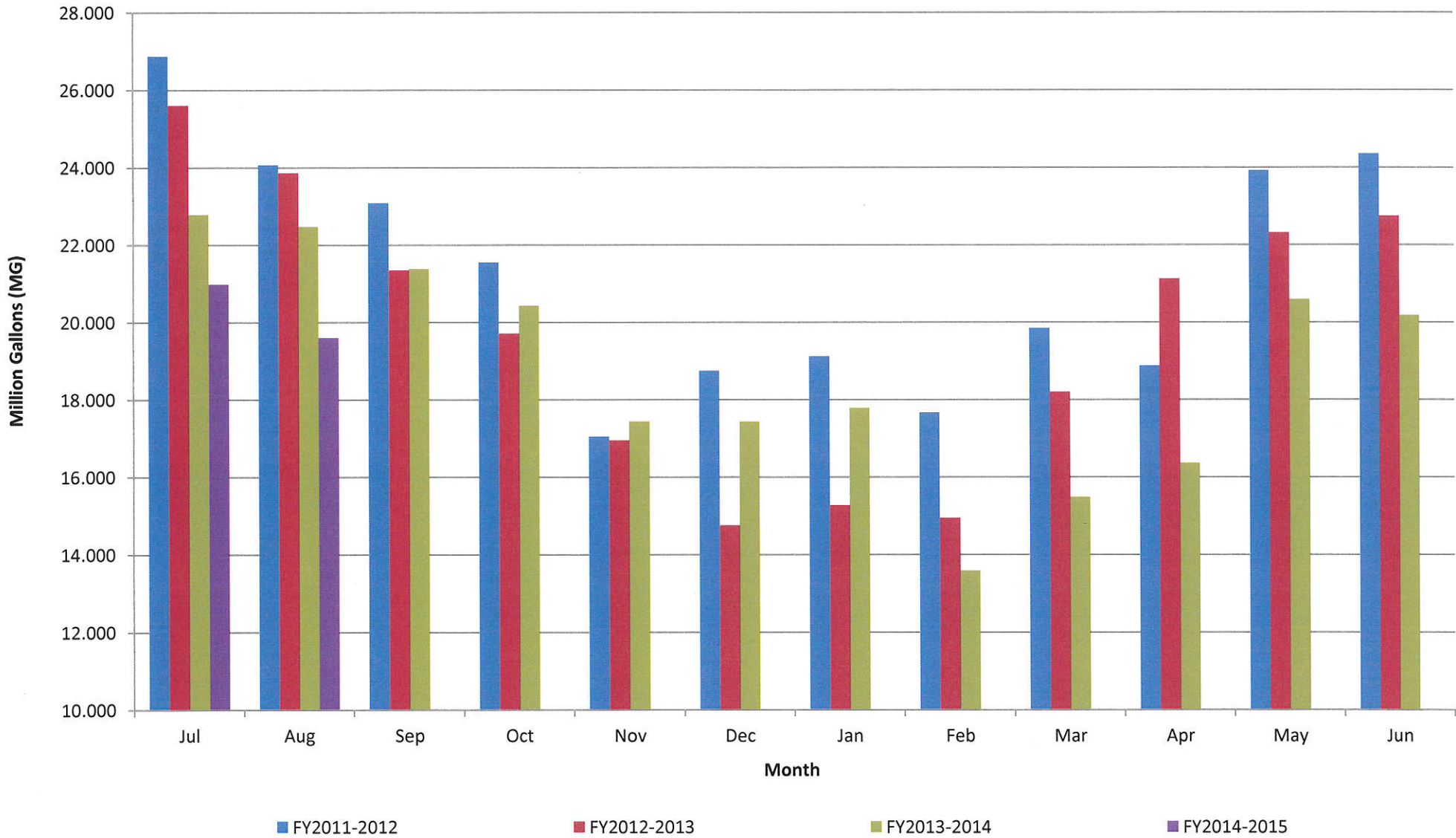
LOCSD Water Data

Water Production Data in Million Gallons

	FY 11-12	FY 12-13	FY 13-14	FY 14-15
Jul	26.868	25.600	22.779	20.979
Aug	24.064	23.862	22.470	19.593
Sep	23.086	21.340	21.380	
Oct	21.543	19.708	20.431	
Nov	17.046	16.939	17.436	
Dec	18.745	14.747	17.431	
Jan	19.117	15.268	17.780	
Feb	17.662	14.940	13.584	
Mar	19.843	18.193	15.476	
Apr	18.873	21.118	16.354	
May	23.914	22.310	20.591	
Jun	24.347	22.743	20.179	
TOTAL	255.107	236.767	225.890	40.572

Consumption is billed for a two month period every month.
Revenue is based on gallons billed - not cash received.
Production is recorded daily.

Historical to Present LOCS D Well Production Data

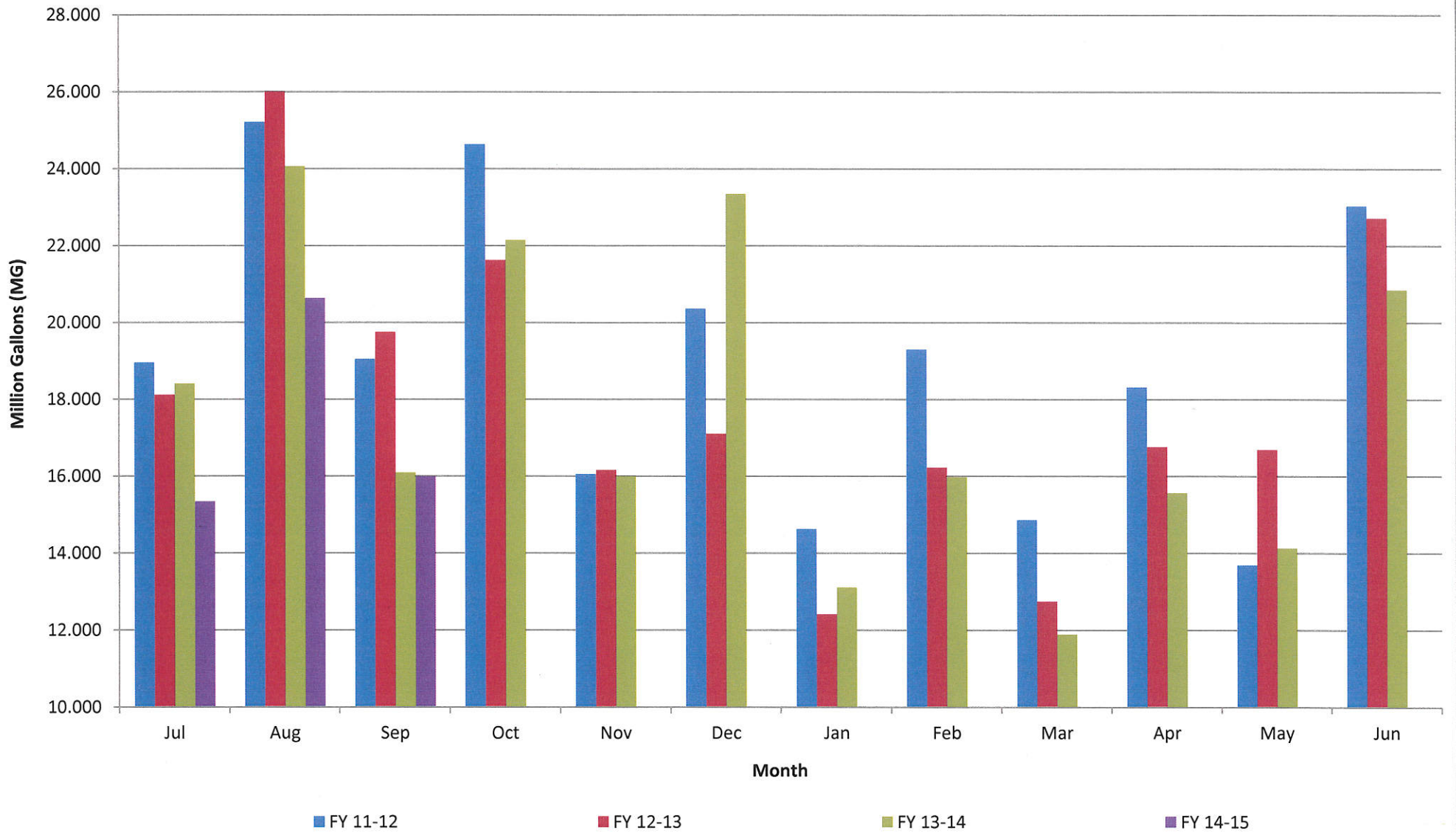


LOCSD Water Data

Water Consumption Data in Million Gallons						
% of Service Area	Billing Period		FY 11-12	FY 12-13	FY 13-14	FY 14-15
43	5/11 to 7/10	Jul	18.950	18.110	18.402	15.330
57	6/11 to 8/10	Aug	25.210	26.006	24.061	20.627
43	7/11 to 9/10	Sep	19.044	19.748	16.087	15.989
57	8/11 to 10/10	Oct	24.636	21.617	22.142	
43	9/11 to 11/10	Nov	16.048	16.155	15.994	
57	10/11 to 12/10	Dec	20.355	17.096	23.342	
43	11/11 to 1/10	Jan	14.623	12.406	13.105	
57	12/11 to 2/10	Feb	19.294	16.223	15.969	
43	1/11 to 3/10	Mar	14.858	12.737	11.886	
57	2/11 to 4/10	Apr	18.313	16.756	15.559	
43	3/11 to 5/10	May	13.685	16.686	14.131	
57	4/11 to 6/10	Jun	23.029	22.709	20.852	
		TOTAL	228.044	216.249	211.530	51.946

Consumption is billed for a two month period every month.
 Revenue is based on gallons billed - not cash received.
 Production is recorded daily.

Historical to Present LOCS D Water Consumption

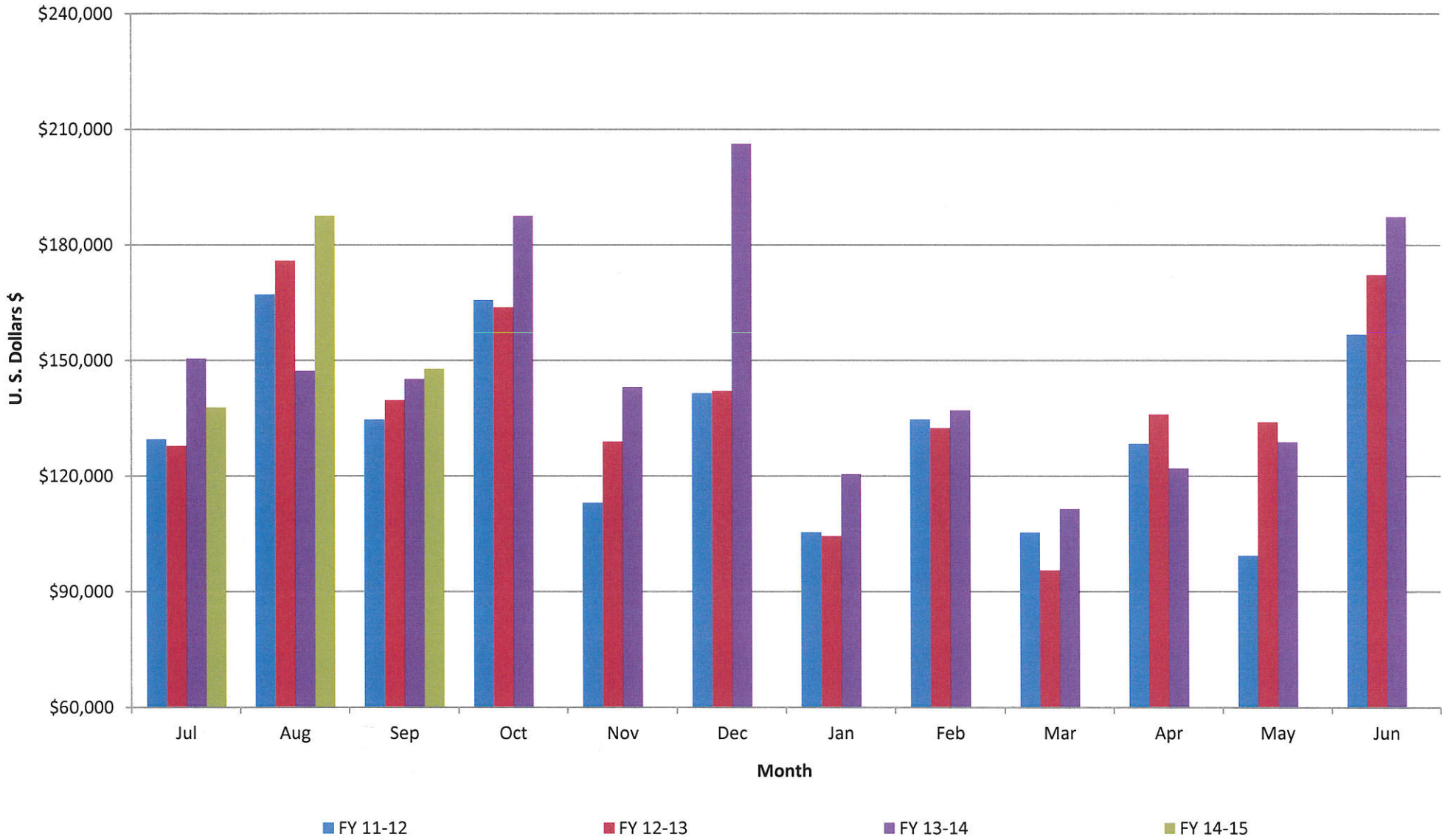


LOCSD Water Data

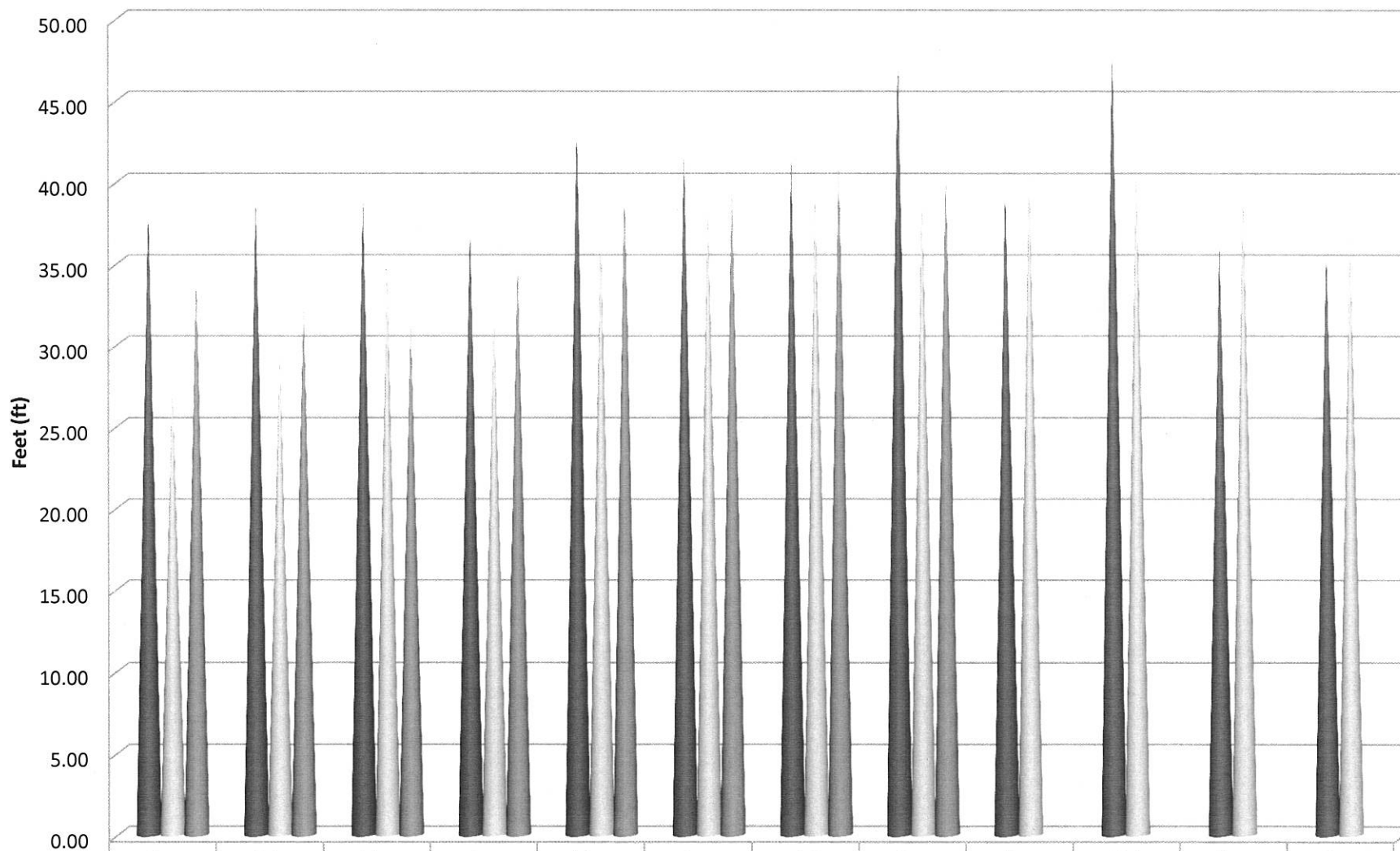
Water Revenue Data						
% of Service Area	Billing Period		FY 11-12	FY 12-13	FY 13-14	FY 14-15
43	5/11 to 7/10	Jul	\$129,524.46	\$127,737.70	\$150,401.90	\$137,752.98
57	6/11 to 8/10	Aug	\$167,062.07	\$175,798.70	\$147,246.54	\$187,468.02
43	7/11 to 9/10	Sep	\$134,650.62	\$139,628.43	\$145,135.28	\$147,808.06
57	8/11 to 10/10	Oct	\$165,624.63	\$163,698.98	\$187,431.78	
43	9/11 to 11/10	Nov	\$113,044.46	\$128,918.55	\$143,029.03	
57	10/11 to 12/10	Dec	\$141,492.06	\$142,026.32	\$206,187.91	
43	11/11 to 1/10	Jan	\$105,371.44	\$104,328.08	\$120,500.40	
57	12/11 to 2/10	Feb	\$134,692.14	\$132,433.64	\$137,045.65	
43	1/11 to 3/10	Mar	\$105,313.67	\$95,487.96	\$111,475.31	
57	2/11 to 4/10	Apr	\$128,368.97	\$135,947.81	\$121,943.68	
43	3/11 to 5/10	May	\$99,287.66	\$133,939.00	\$128,784.61	
57	4/11 to 6/10	Jun	\$156,744.35	\$172,139.37	\$187,230.13	
		TOTAL	\$1,581,176.53	\$1,652,084.54	\$1,786,412.22	\$473,029.06

Consumption is billed for a two month period every month.
 Revenue is based on gallons billed - not cash received.
 Production is recorded daily.

Historical to Present LOCSD Water Revenue

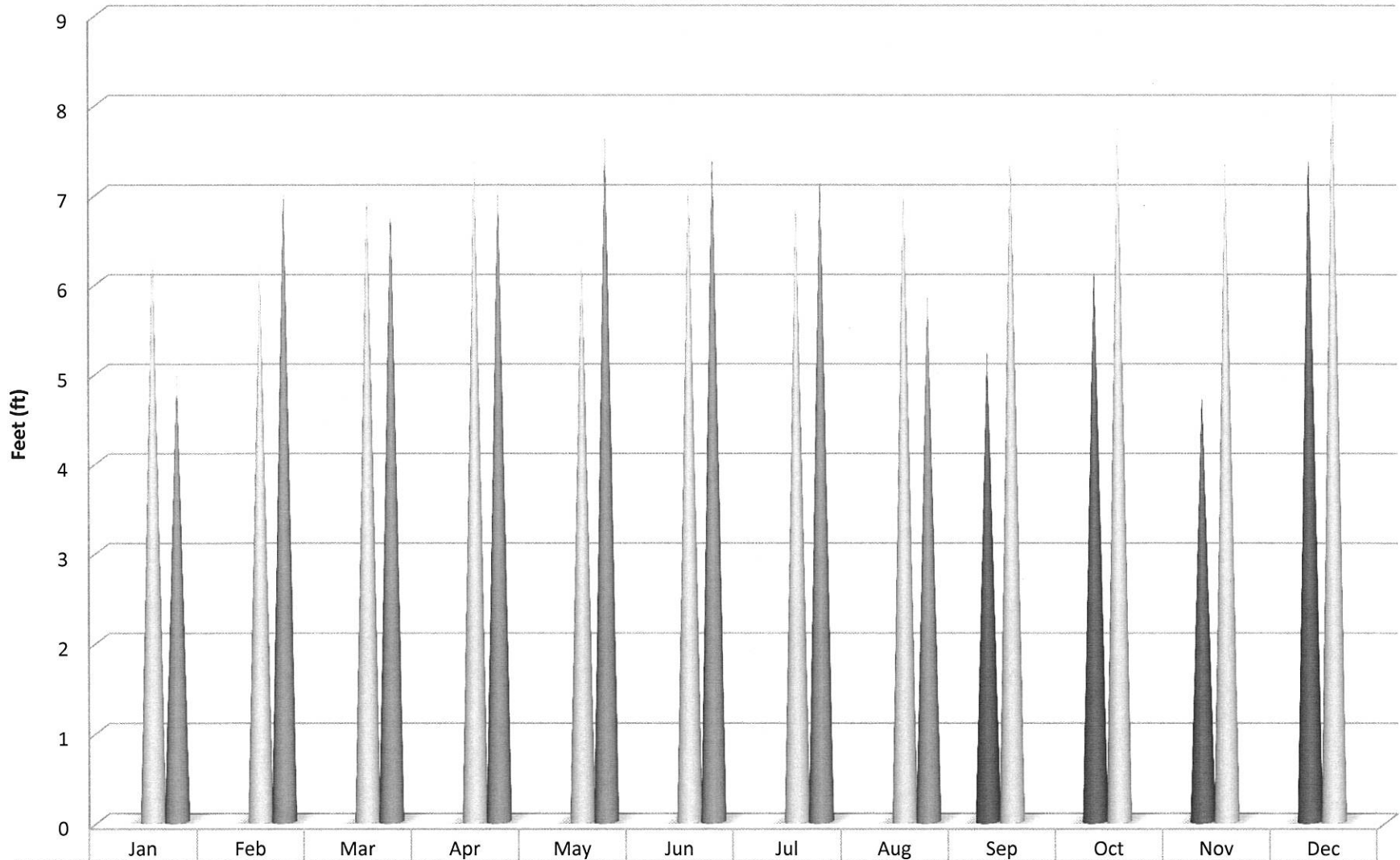


8th Street Well Static Water Levels



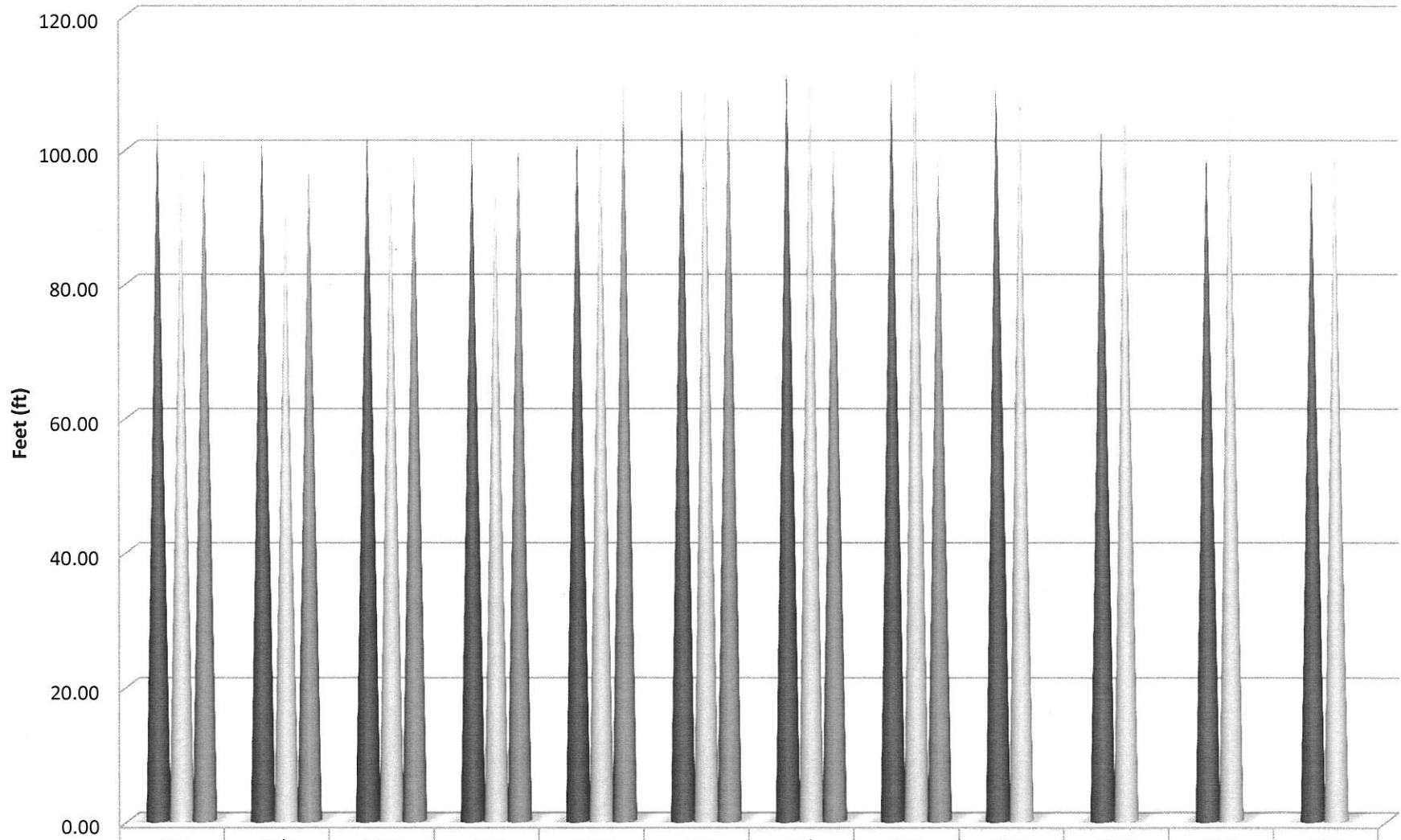
	Jan	Feb	Mar	Apr	May	Jun	Jul	Aug	Sep	Oct	Nov	Dec
■ 2012	38.40	38.90	38.90	37.20	43.45	41.90	41.40	47.60	39.70	48.10	36.20	35.80
■ 2013	28.00	29.80	34.80	32.50	37.20	39.00	39.80	39.80	41.10	41.30	39.50	37.00
■ 2014	34.20	32.50	31.30	35.10	39.40	39.70	41.10	40.70				

3rd Street Well Static Water Levels



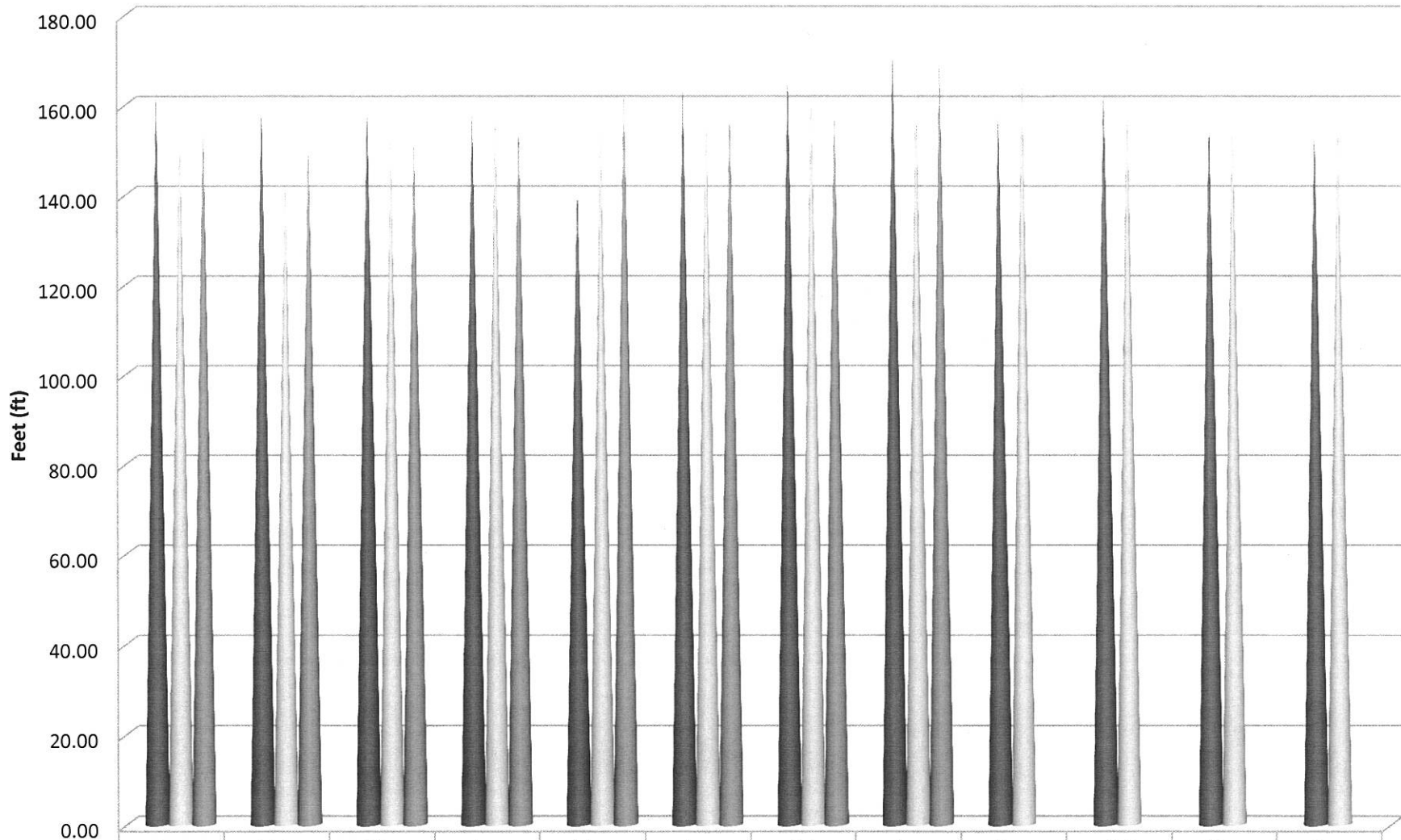
	Jan	Feb	Mar	Apr	May	Jun	Jul	Aug	Sep	Oct	Nov	Dec
■ 2012									5.25	6.20	4.80	7.50
■ 2013	6.50	6.30	7.10	7.50	6.50	7.30	7.00	7.30	7.70	7.90	7.50	8.45
■ 2014	5.00	7.10	6.90	7.10	7.70	7.55	7.30	5.90				

Palisades Well Static Water Levels



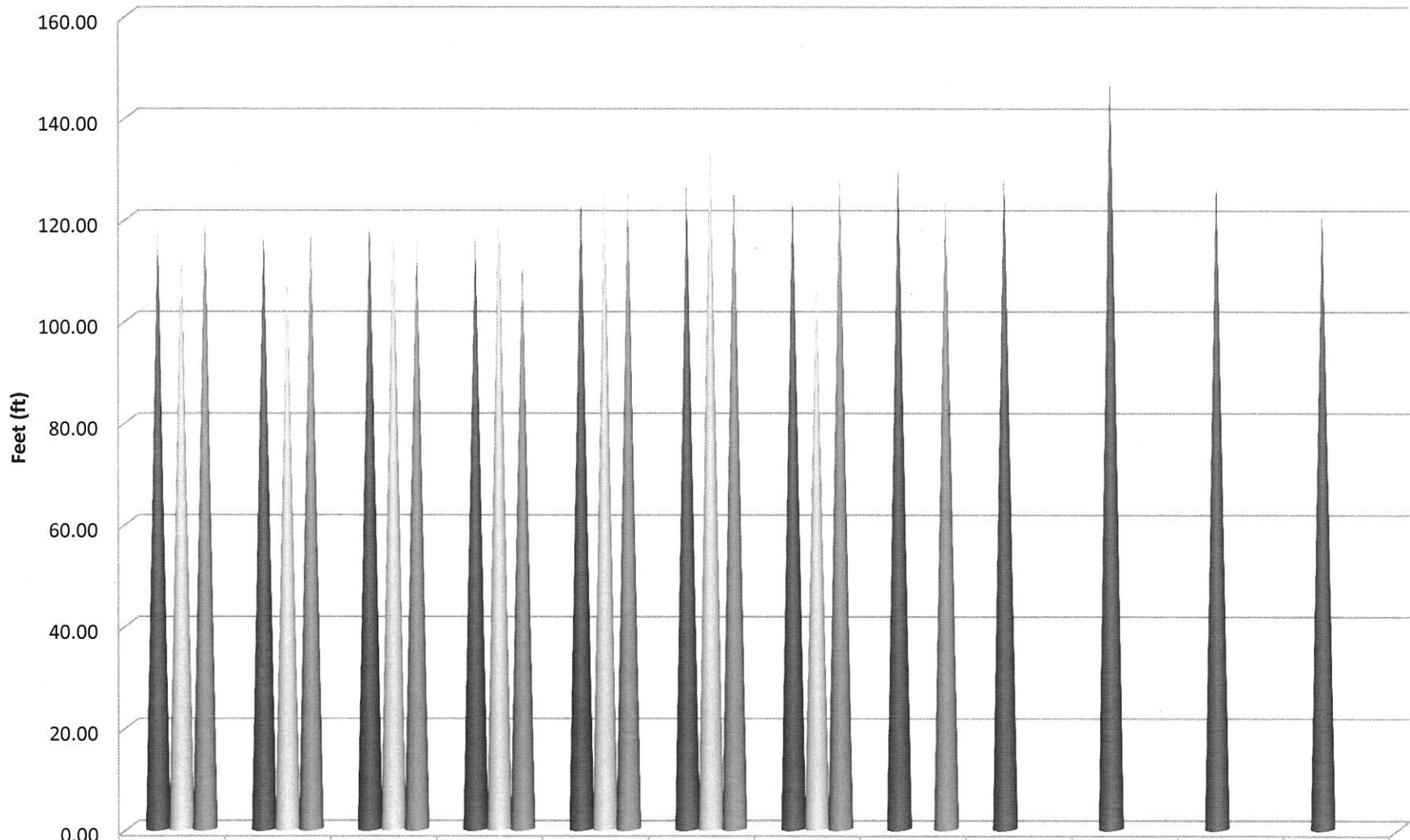
	Jan	Feb	Mar	Apr	May	Jun	Jul	Aug	Sep	Oct	Nov	Dec
■ 2012	105.00	102.60	103.50	102.30	103.10	109.30	113.80	111.40	110.30	104.60	100.90	98.50
■ 2013	97.20	92.30	97.90	96.20	104.90	113.60	112.60	118.70	109.80	109.90	106.50	101.35
■ 2014	100.40	98.60	99.90	102.10	109.85	110.3	101.60	100.05				

10th Street Well Static Water Levels



	Jan	Feb	Mar	Apr	May	Jun	Jul	Aug	Sep	Oct	Nov	Dec
■ 2012	162.85	160.60	159.90	158.80	142.50	163.50	168.00	171.90	158.80	164.60	157.40	154.60
□ 2013	157.00	144.90	152.90	161.60	156.80	161.30	163.90	164.80	168.40	164.30	161.20	157.45
■ 2014	156.20	152.40	152.60	156.80	162.90	160.15	159.30	171.30				

South Bay Lower Well Static Water Levels



	Jan	Feb	Mar	Apr	May	Jun	Jul	Aug	Sep	Oct	Nov	Dec
■ 2012	118.60	118.20	120.30	117.10	125.70	127.10	126.20	131.20	129.70	149.60	129.00	122.60
■ 2013	117.25	109.90	121.60	127.60	127.50	139.00	108.60					
■ 2014	122.10	118.90	116.80	112.90	126.00	128.50	129.30	125.60				