



September 21, 2022

TO: Utilities Advisory Committee

FROM: Margaret Falkner, Utility Systems Manager
Alicia Zuniga, Utility Billing Specialist

SUBJECT: **Agenda Item 4 - 09/21/2022 Utilities Advisory Committee Meeting**
Utilities Department Report for **August 2022**

President
Matthew D. Fourcroy

Vice President
Charles L. Cesena

Directors
Troy C. Gatchell
Marshall E. Ochylski
Christine M. Womack

General Manager
Ron Munds

District Accountant
Robert Stilts, CPA

Unit Chief
Eddy Moore

Battalion Chief
Paul Provence

Mailing Address:
P.O. Box 6064
Los Osos, CA 93412

Offices:
2122 9th Street, Suite 110
Los Osos, CA 93402

Phone: 805/528-9370
FAX: 805/528-9377

www.losososcscsd.org

WATER PRODUCTION INFORMATION

The total production for the month of **August 2022** was approximately **15.5 million gallons (MG)** this equates to an average daily demand of **499,100 gallons**. This represents a **3.01% increase** in production when compared to last year.

Using the state's formula to calculate residential usage per capita per day, for the month of **August 2022** our residential customers used **66.7** gallons per person per day, an increase from 64.8 gallons per person per day in August 2021.

PRODUCTION AND RUNTIME HOURS BY WELL SITE

The following tables break down the production by well site and runtime on the pump motors for the month of **August 2022**. Totals for last year are included for comparison:

Production (MG) August	2022	2021
Palisades	0.6550	1.5048
3rd St	2.7117	2.8787
8th Street/El Moro	2.5164	1.4497
10th St	5.4904	4.8207
South Bay (lower)	4.0533	4.2172
South Bay (upper)	0.0440	0.1470
Total:	15.4708	15.0181

Runtime (Hours) August	2022	2021
Palisades	32.4	72.4
3rd St	703.3	708.0
8th Street/El Moro	136.4	80.4
10th St	445.9	408.7
South Bay (lower)	669.4	698.7
South Bay (upper)	18.7	64.9
Total:	2006.1	2033.1

WATER BILLING INFORMATION

Billing Period	FY '21-'22			FY '22-'23		
	Month	Gallons	Revenue	Month	Gallons	Revenue
5/11 to 7/10	Jul	11,795,212	\$213,418.01	Jul	12,046,540	\$221,290.12
6/11 to 8/10	Aug	17,035,700	\$298,796.24	Aug	17,274,312	\$315,919.84
7/11 to 9/10	Sep	12,846,152	\$227,634.65	Sep		
8/11 to 10/10	Oct	15,479,112	\$277,602.84	Oct		
9/11 to 11/10	Nov	10,715,100	\$199,353.50	Nov		
10/11 to 12/10	Dec	15,013,108	\$270,072.58	Dec		
11/11 to 1/10	Jan	9,541,488	\$183,009.48	Jan		
12/11 to 2/10	Feb	11,932,096	\$230,156.34	Feb		
1/11 to 3/10	Mar	9,532,512	\$184,810.59	Mar		
2/11 to 4/10	Apr	14,610,684	\$269,072.92	Apr		
3/11 to 5/10	May	10,286,496	\$193,369.27	May		
4/11 to 6/10	Jun	16,743,980	\$298,058.64	Jun		

Consumption and revenue data is based on billing for a 60-day period and final bills. Production data is based on a monthly period.

DRAINAGE WDID # 3 40M2000133

The District continues to operate and comply with the General National Pollutant Discharge Elimination System (NPDES) Permit for storm water discharges for small Municipal Separate Storm Sewer Systems (MS4). Staff has begun reporting for the calendar 2021 year through the state's portal. Reporting will be finalized by October 2022.

Storm water pollution prevention measures are available on the District's Drainage web page:

<http://www.losososcsd.org/drainage>

RAINFALL TOTALS

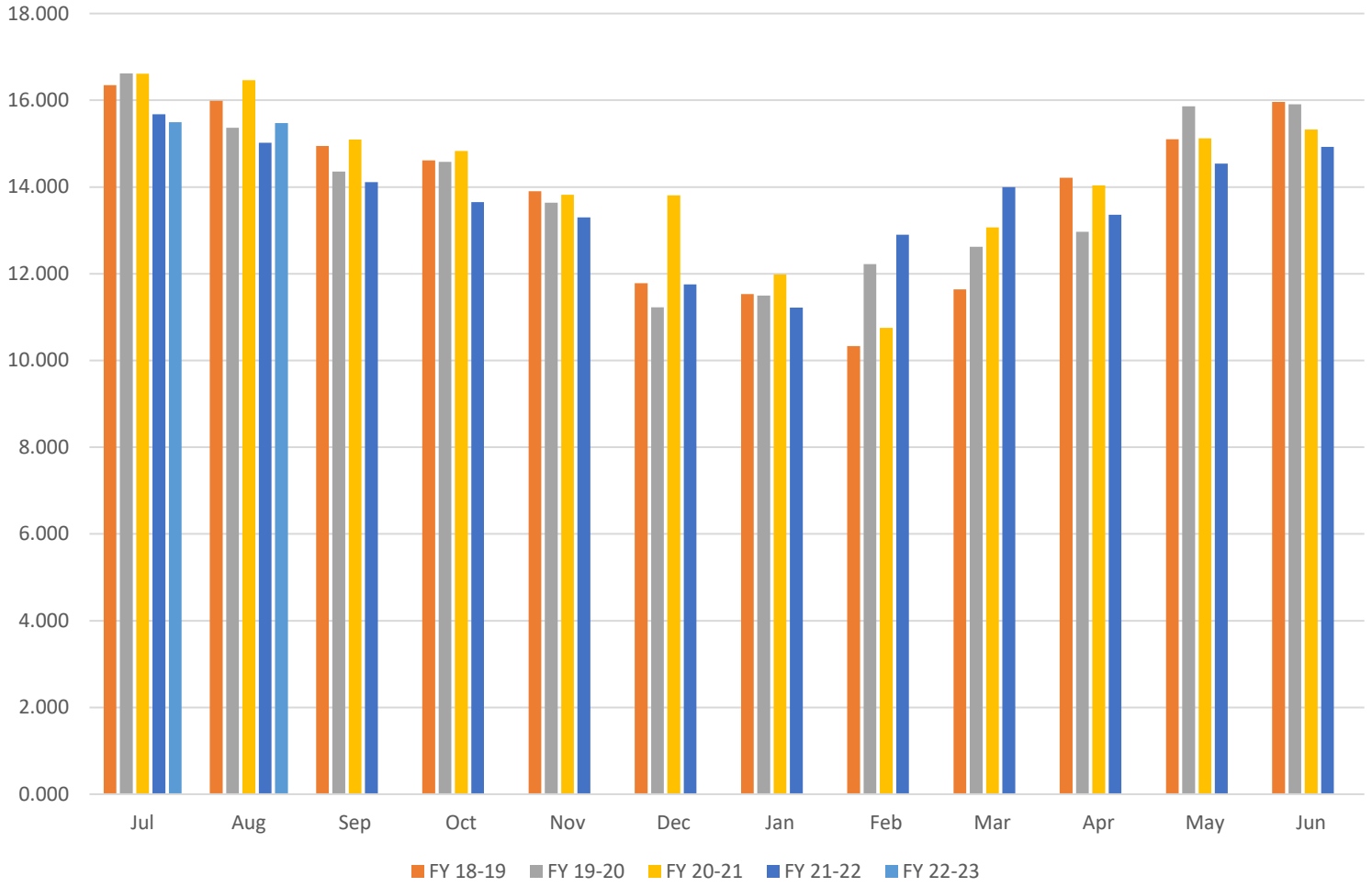
The County has a link to rain and reservoir information: <http://wr.slocountywater.org/home.php> below is a table of historical rainfall totals from the Los Osos Landfill rain monitor. This has been arranged to coincide with our Water Shortage Contingency Plan Climate Trigger which is based on rainfall measured from April 1st through March 31st.

Los Osos Landfill # 727													
*** All units are in inches ***													
Water Year	APR	MAY	JUN	JUL	AUG	SEP	OCT	NOV	DEC	JAN	FEB	MAR	Total
2022-2023	0.35	0.00	0.00	0.12	0.00	0.00	0.00	0.00	0.00	0.00	0.00	0.00	0.47
2021-2022	0.00	0.04	0.00	0.00	0.00	0.00	2.64	0.27	8.40	0.04	0.00	1.81	13.20
2020-2021	1.89	0.12	0.04	0.00	0.04	0.00	0.00	0.00	0.04	9.93	0.20	1.26	13.52
2019-2020	0.08	1.53	0.00	0.00	0.08	0.00	0.00	2.13	4.37	0.20	0.04	4.80	13.23
2018-2019	0.79	0.00	0.00	0.00	0.00	0.00	0.43	3.75	1.14	6.14	6.90	3.94	23.09
2017 - 2018	0.55	0.27	0.00	0.00	0.00	0.16	0.16	0.47	0.12	3.78	0.16	7.95	13.62

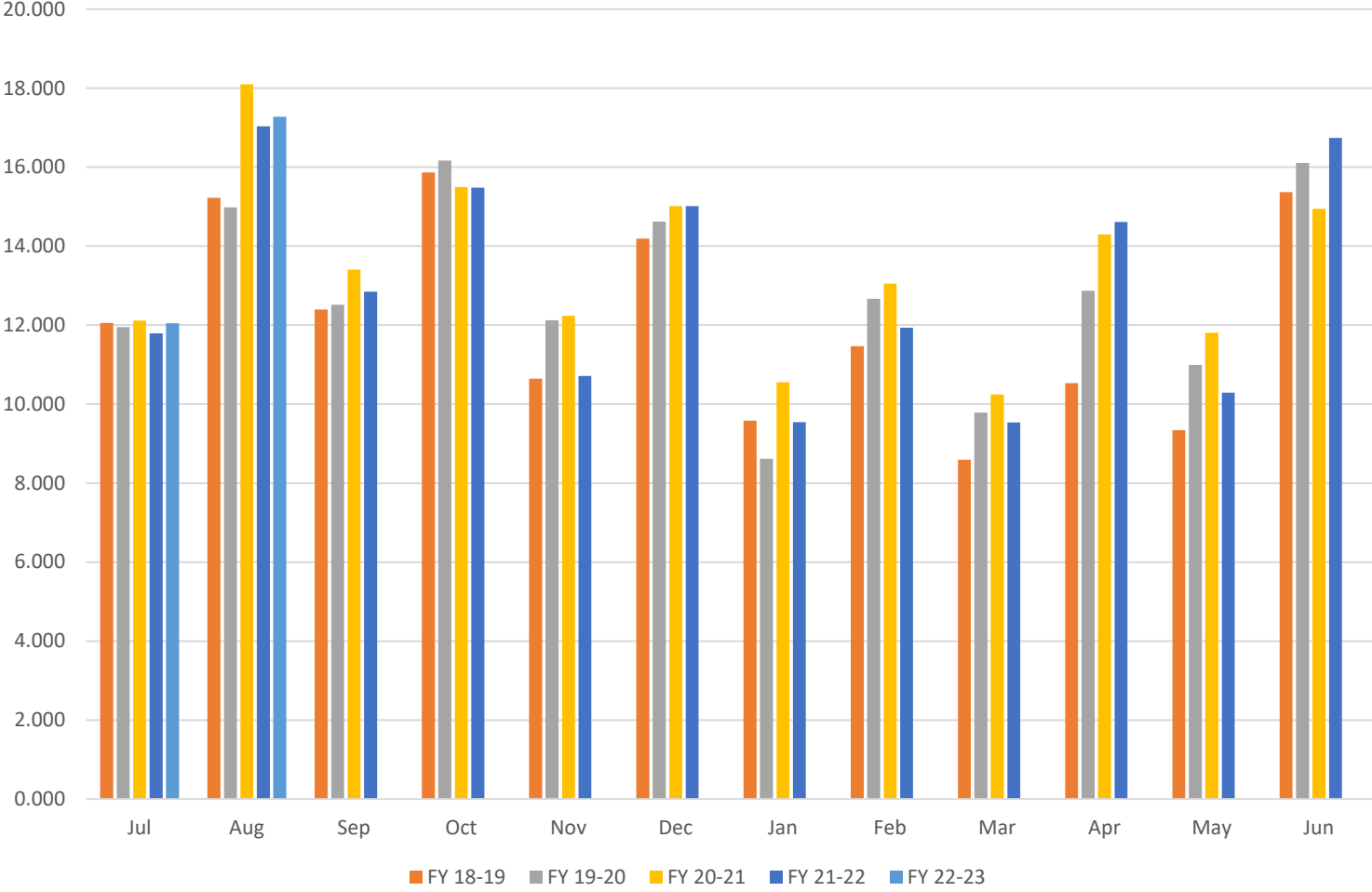
RECOMMENDATION

Staff encourages the Committee to ask any questions they may have with regard to the aforementioned report or any other related item that may be listed separately as an agenda item.

LOCS D Water Production in Million Gallons



LOCSO Water Consumption in Million Gallons



LOCS D Revenue Based on Water Billing

