



June 22, 2015

TO: LOCSO Board of Directors
FROM: Margaret Falkner, Utility Compliance Technician III *MX7*
SUBJECT: Agenda Item 9B – 7/9/2015 Board Meeting
Utilities Department Report for May 2015

President
R. Michael Wright

Vice President
Marshall E. Ochylski

Directors
Charles L. Cesena
Jon-Erik G. Storm
Louis G. Tornatzky

General Manager
Kathy A. Kivley

District Accountant
Michael L. Doyel

Fire Chief
Robert Lewin

Battalion Chief
Phill Veneris

Mailing Address:
P.O. Box 6064
Los Osos, CA 93412

Offices:
2122 9th Street, Suite 102
Los Osos, CA 93402

Phone: 805/528-9370
FAX: 805/528-9377

www.lososocsd.org

WATER PRODUCTION

The total production for the month of **May 2015** was approximately **14.5 million gallons (MG)** this equates to an average daily demand of 466,600 gallons. This represents a **decrease** in production from last year by approximately **30%**.

Fifty-seven percent of the service area received bills for approximately **15.1 MG** consumption for the period **April 10, 2015 through June 11, 2015**. This generated **\$148,384** in revenue. This represents a **decrease** in consumption by approximately **27%** and a **decrease** in revenue by approximately **20%** when compared to last year. Graphs and tables are attached.

PRODUCTION AND RUNTIME HOURS BY WELL SITE

Below are two tables that break down the production by well site and the runtime on the pump motor for the month of **May 2015**. Totals for last year are included for comparison:

Production (MG) May	2015	2014
Palisades	1.4810	7.3720
3 rd Street/Bayside	3.0260	3.1523
8 th Street/El Moro	4.1936	4.7107
10 th Street	3.6716	4.3586
South Bay (lower)	1.9833	0.9969
South Bay (upper)	0.1080	0.0000
TOTAL:	14.4635	20.5905

Runtime (Hours) May	2015	2014
Palisades	56.9	217.0
3 rd Street/Bayside	722.4	715.4
8 th Street/El Moro	200.5	225.0
10 th St	194.7	230.8
South Bay (lower)	695.6	735.4
South Bay (upper)	485.3	0.0
TOTAL:	2355.4	2123.6

Please refer to the attached May 2015 "Well Log Summaries" for more data regarding chemical usage, soundings, and alarms.

CALIFORNIA STATE OF EMERGENCY DUE TO DROUGHT

We remain officially in a drought.

On May 29, 2015, District staff attended a Water Forum hosted by the El Moro Democratic Club of Los Osos. This was a non-partisan event held at the South Bay Community Center to address measures each water purveyor in Los Osos has taken in response to the governor's executive order. All the Los Osos water purveyors were in attendance. Short presentations were provided followed by questions from the attendees. It was a very well attended meeting. On May 26, 2015, staff attended a webinar on the proposed regulations for small water systems. This presented new information which is noted in ***bold italics*** below. The Executive order requires the following for small water systems:

1. Reduce production by 25% compared to ***June – Nov 2013 (baseline) OR***
2. Limit outdoor irrigation to two days per week ***with enforcement***
3. ***AND*** One time reporting (December 15, 2015)

The District's water service area has reduced pumping on average by 13.5% between 2013 and 2014 as specified above. We will report in December 2015 in an effort to meet a 25% reduction from the baseline.

BIG NEWS FROM UTILITY BILLING

In May 2015, the Payment Portal went live! This capability has been requested by our customers for many years. With the new software we were able to make this a reality. Now customers who want access to their account information including payment history, usage history, and more can set up an on-line account. A billing insert was sent to customers with their water bills in May and June. Customers should have their most recent bill in hand before setting up the on-line account. The customer account number is a five-digit number so leading zeros are important. Customers may pay using, Visa, MasterCard, and Discover credit cards. Customers will be charged 3% of the balance due paid to a third party vendor. None of the credit card information is stored on the District's server. Here is a picture of the secure portal:



Los Osos
Community
Services District



Welcome to the Los Osos CSD Online Water Account Access



Username

Password

Forgot Password?

Please register in order to view your account.

Want to make a payment without logging in?

For Customers in the Los Osos Community Services District Water Service Area

Credit card information is not stored by the Los Osos Community Services District.

LOCSO CONSUMER CONFIDENCE REPORT

The District's Consumer Confidence Report was mailed to all customers the week of June 8, 2015. This is a water quality report of the drinking water system with lab results for the calendar year 2014. The annual report is due in the consumer's hands by July 1st every year. This year we went with a new vendor and were able to use local pictures. Staff is happy with the results and have heard positive comments from the public. We beat the deadline and look forward to working with this new vendor in the future. A link to the electronic copy is here:

http://www.losososcsd.org/Library/Utilities/LosOsosWQR_web2015.pdf

DRAINAGE WDID # 3 40M2000133

The District complies with the General National Pollutant Discharge Elimination System (NPDES) Permit for storm water discharges for small Municipal Separate Storm Sewer Systems (MS4). Under this permit, all Community Services Districts are considered "Non-traditional" MS4s. District staff continues working with District Engineering and Water Board staff to meet compliance in this second year of the new permit.

Rain measured at our operations facility between January 1st & December 31st

Month	Year	Rainfall (Inches)	Year	Rainfall (Inches)	Year	Rainfall (Inches)	Year	Rainfall (Inches)
January	2015	0.19	2014	0.00	2013	0.97	2012	1.70
February	2015	0.89	2014	3.61	2013	0.56	2012	0.26
March	2015	0.26	2014	1.34	2013	0.62	2012	2.19
April	2015	0.79	2014	1.03	2013	0.03	2012	2.28
May	2015	0.13	2014	0.00	2013	0.10	2012	0.00
June	2015		2014	0.00	2013	0.00	2012	0.00
July	2015		2014	0.00	2013	0.00	2012	0.00
August	2015		2014	0.00	2013	0.00	2012	0.00
September	2015		2014	0.00	2013	0.00	2012	0.00
October	2015		2014	1.21	2013	0.29	2012	1.17
November	2015		2014	1.56	2013	0.36	2012	1.03
December	2015		2014	4.93	2013	0.19	2012	2.89
Total		<u>2.26</u>		<u>13.67</u>		<u>3.12</u>		<u>11.52</u>

BAYRIDGE ESTATES WDID# 3 401027001

Crews continue monitoring and grounds keeping at this facility. Specialty Construction Inc. was awarded the Phase I improvement projects for the Bayridge Estates Subdivision improvements. They should be finished with their work by the first week of August.

Once connected to the Los Osos Wastewater Project, the District crews will no longer maintain the septic system.

VISTA DE ORO WDID# 3 401024001

Crews continue monitoring and grounds keeping at this facility. Once connected to the Los Osos Wastewater Project, the District crews will no longer maintain the septic system. Prior to connection there will be maintenance projects to be completed by our crew for County acceptance of the system.

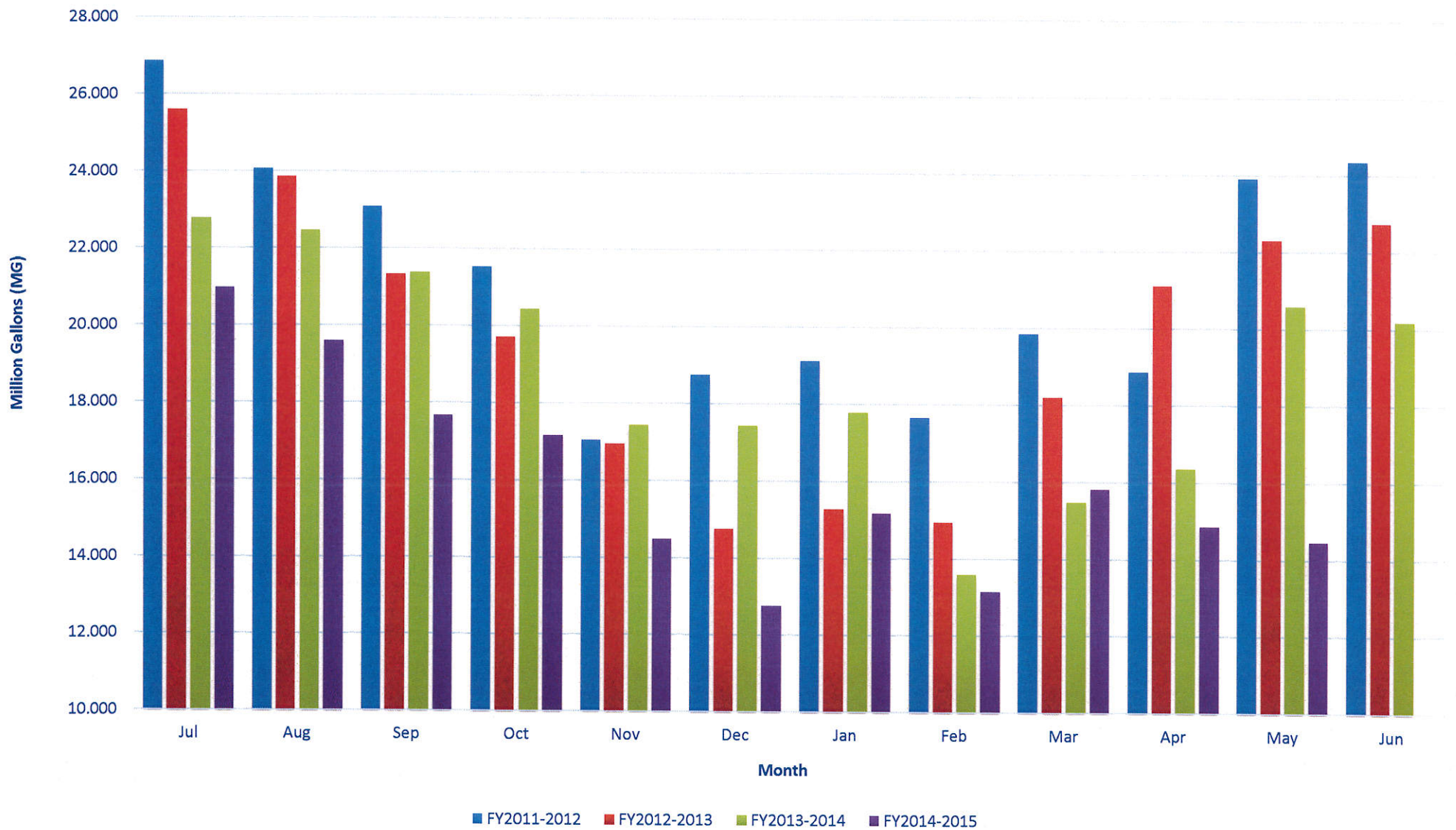
RECOMMENDATION

Staff encourages the Board to ask any questions they may have with regard to the aforementioned report or any other related item that may be listed separately as an agenda item.

Attachments

MAY 2015	8th St./ EI Moro Well	3rd St./ Bayside Well	10th St. Well	South Bay Well	South Bay Upper Well	Palisades Well	All Wells TOTAL	Last Years TOTAL	Percent% Differential
Total Gallons Produced, Mgal	4.1936	3.0260	3.6716	1.9833	0.1080	1.4810	14.4635	20.5905	-29.76%
Average Daily Flow, Mgal							0.4666		
Total Gallons to Waste (Filter Backwash), Mgal	0.0000			0.0000	0.0000		0.0000	0.0367	
Total Gallons to Waste (System Flushing), Mgal							0.0000	0	
Distribution System Losses (Water Line Breaks), Mgal							0.0000	0	
Total Gallons Adjusted, Mgal	4.1936			1.9833			14.4635	20.5538	-29.63%
Pump Runtime, total hours	200.5	722.4	194.7	695.6	485.3	56.9	2355.4	2123.6	9.84%
Daily Avg. Runtime, hours/day	6.5	23.3	6.3	22.4	15.7	1.8			
Energy Used, kWatts	7853	5754	8634	11442		2349	36032	49522	-27.24%
Eff. Ratio, kWatts/hr	39.17	7.97	44.35	16.45		41.28			
Chlorine Used, total gallons	53.3	30.5	19.7	33.9		20.1	157.5	227.5	-30.78%
Aqua Mag, pounds	49.2		31.4	0.0		2.6	83.2	172.2	-51.68%
Static water level, ft.	33.20	6.70	156.65	124.50	94.70	93.10			
Pump water level, ft.	140.40	54.50	245.70	184.70	118.20	131.90			
Draw-down level, ft.	107.20	47.80	89.05	60.20	23.50	38.80			
Gallons per minute	353	71	352	21	21	280			
Pressure, psi	93	79	38	79	59	54			
Alarm Events									
YES / NO	YES	NO	NO	NO	NO	YES			
Type of event									
Well Failure							0		
Power Failure							0		
Low Chlorine							0		
Other:	1					1	2		
Total number alarms	1	0	0	0	0	1	2	3	-33.33%

Historical to Present LOCSD Well Production Data



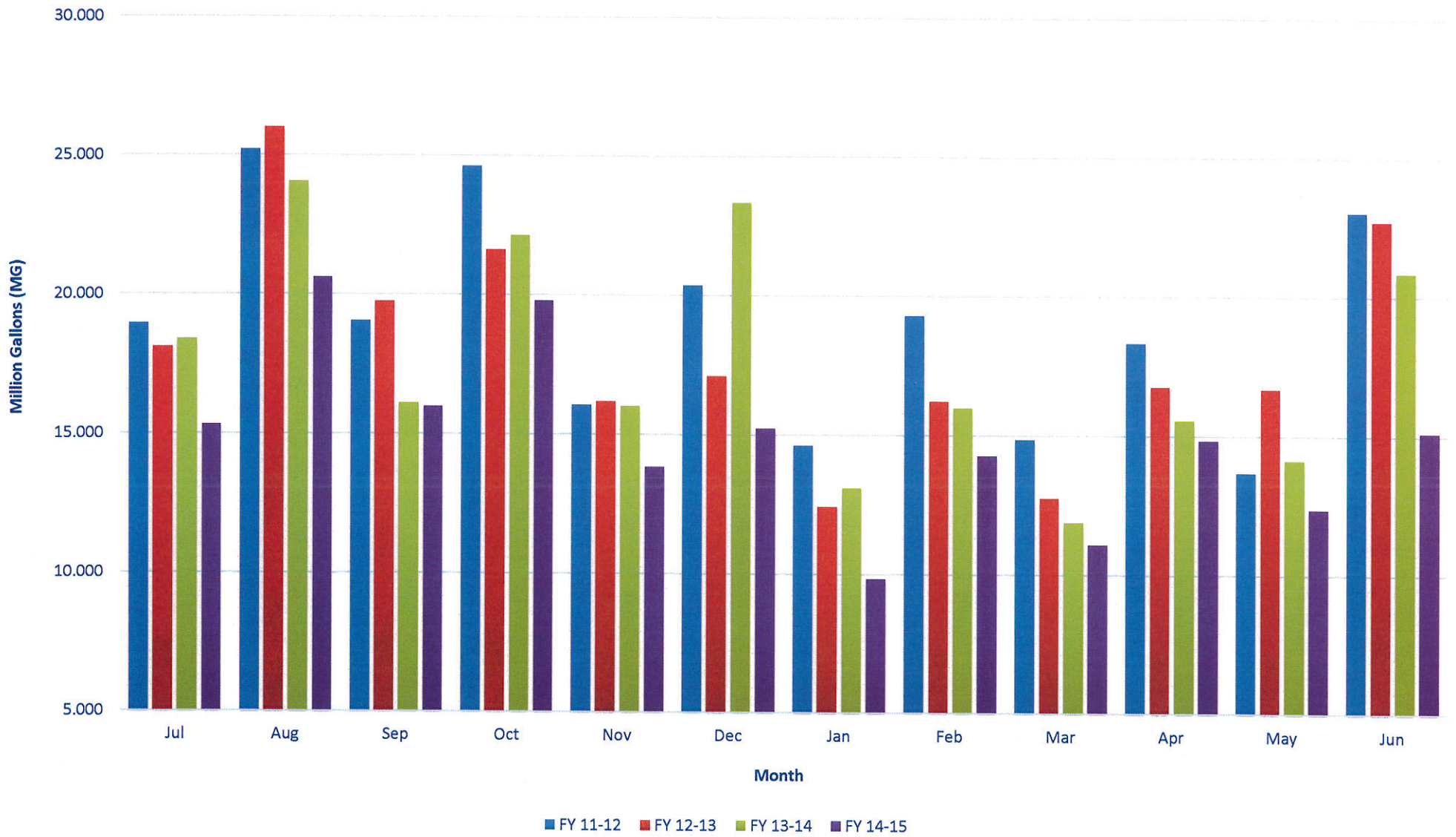
LOCSD Water Data

Water Production Data in Million Gallons

	FY 11-12	FY 12-13	FY 13-14	FY 14-15
Jul	26.868	25.600	22.779	20.979
Aug	24.064	23.862	22.470	19.593
Sep	23.086	21.340	21.380	17.668
Oct	21.543	19.708	20.431	17.169
Nov	17.046	16.939	17.436	14.482
Dec	18.745	14.747	17.431	12.759
Jan	19.117	15.268	17.780	15.174
Feb	17.662	14.940	13.584	13.142
Mar	19.843	18.193	15.476	15.807
Apr	18.873	21.118	16.354	14.856
May	23.914	22.310	20.591	14.464
Jun	24.347	22.743	20.179	
TOTAL	255.107	236.767	225.890	176.093

Consumption is billed for a two month period every month.
Revenue is based on gallons billed - not cash received.
Production is recorded daily.

Historical to Present LOCS D Water Consumption

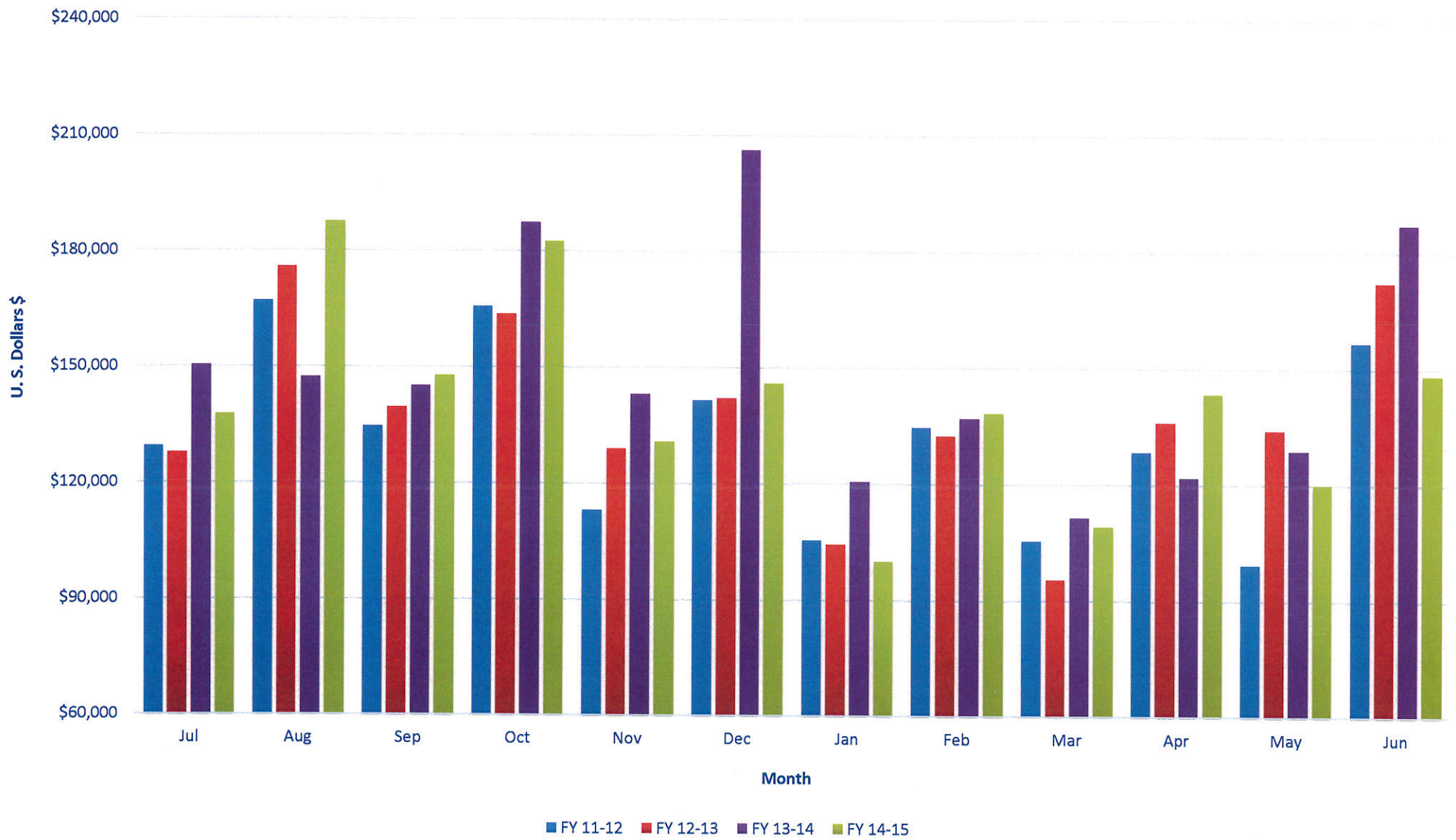


LOCSD Water Data

Water Consumption Data in Million Gallons						
% of Service Area	Billing Period		FY 11-12	FY 12-13	FY 13-14	FY 14-15
43	5/11 to 7/10	Jul	18.950	18.110	18.402	15.330
57	6/11 to 8/10	Aug	25.210	26.006	24.061	20.627
43	7/11 to 9/10	Sep	19.044	19.748	16.087	15.989
57	8/11 to 10/10	Oct	24.636	21.617	22.142	19.804
43	9/11 to 11/10	Nov	16.048	16.155	15.994	13.830
57	10/11 to 12/10	Dec	20.355	17.096	23.342	15.236
43	11/11 to 1/10	Jan	14.623	12.406	13.105	9.828
57	12/11 to 2/10	Feb	19.294	16.223	15.969	14.276
43	1/11 to 3/10	Mar	14.858	12.737	11.886	11.079
57	2/11 to 4/10	Apr	18.313	16.756	15.559	14.829
43	3/11 to 5/10	May	13.685	16.686	14.131	12.367
57	4/11 to 6/10	Jun	23.029	22.709	20.852	15.111
		TOTAL	228.044	216.249	211.530	178.306

Consumption is billed for a two month period every month.
 Revenue is based on gallons billed - not cash received.
 Production is recorded daily.

Historical to Present LOCSD Water Revenue

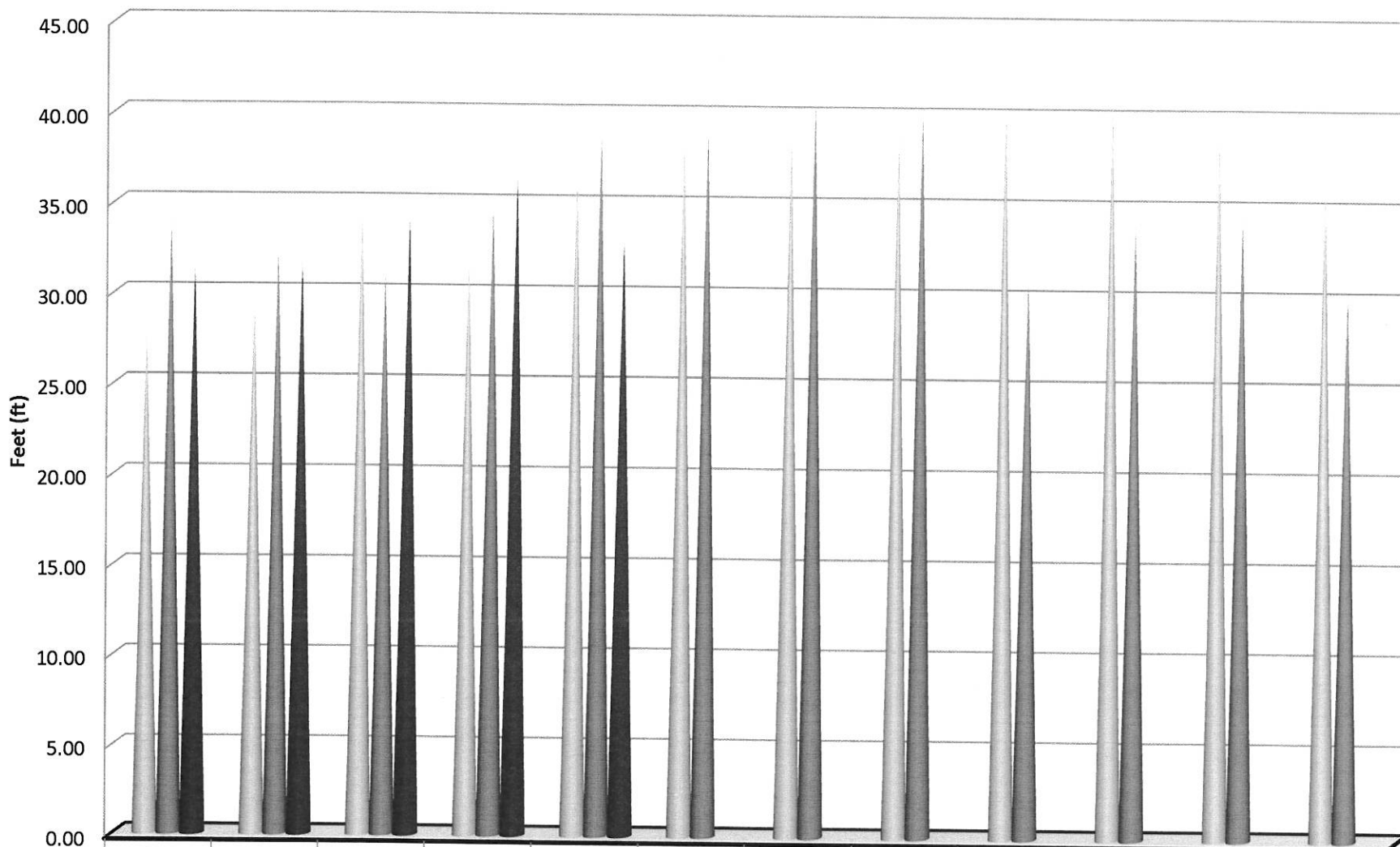


LOCSD Water Data

Water Revenue Data						
% of Service Area	Billing Period		FY 11-12	FY 12-13	FY 13-14	FY 14-15
43	5/11 to 7/10	Jul	\$129,524.46	\$127,737.70	\$150,401.90	\$137,752.98
57	6/11 to 8/10	Aug	\$167,062.07	\$175,798.70	\$147,246.54	\$187,468.02
43	7/11 to 9/10	Sep	\$134,650.62	\$139,628.43	\$145,135.28	\$147,808.06
57	8/11 to 10/10	Oct	\$165,624.63	\$163,698.98	\$187,431.78	\$182,463.96
43	9/11 to 11/10	Nov	\$113,044.46	\$128,918.55	\$143,029.03	\$130,772.31
57	10/11 to 12/10	Dec	\$141,492.06	\$142,026.32	\$206,187.91	\$145,977.27
43	11/11 to 1/10	Jan	\$105,371.44	\$104,328.08	\$120,500.40	\$99,970.19
57	12/11 to 2/10	Feb	\$134,692.14	\$132,433.64	\$137,045.65	\$138,344.52
43	1/11 to 3/10	Mar	\$105,313.67	\$95,487.96	\$111,475.31	\$109,092.25
57	2/11 to 4/10	Apr	\$128,368.97	\$135,947.81	\$121,943.68	\$143,355.32
43	3/11 to 5/10	May	\$99,287.66	\$133,939.00	\$128,784.61	\$120,013.25
57	4/11 to 6/10	Jun	\$156,744.35	\$172,139.37	\$187,230.13	\$148,384.13
		TOTAL	\$1,581,176.53	\$1,652,084.54	\$1,786,412.22	\$1,691,402.26

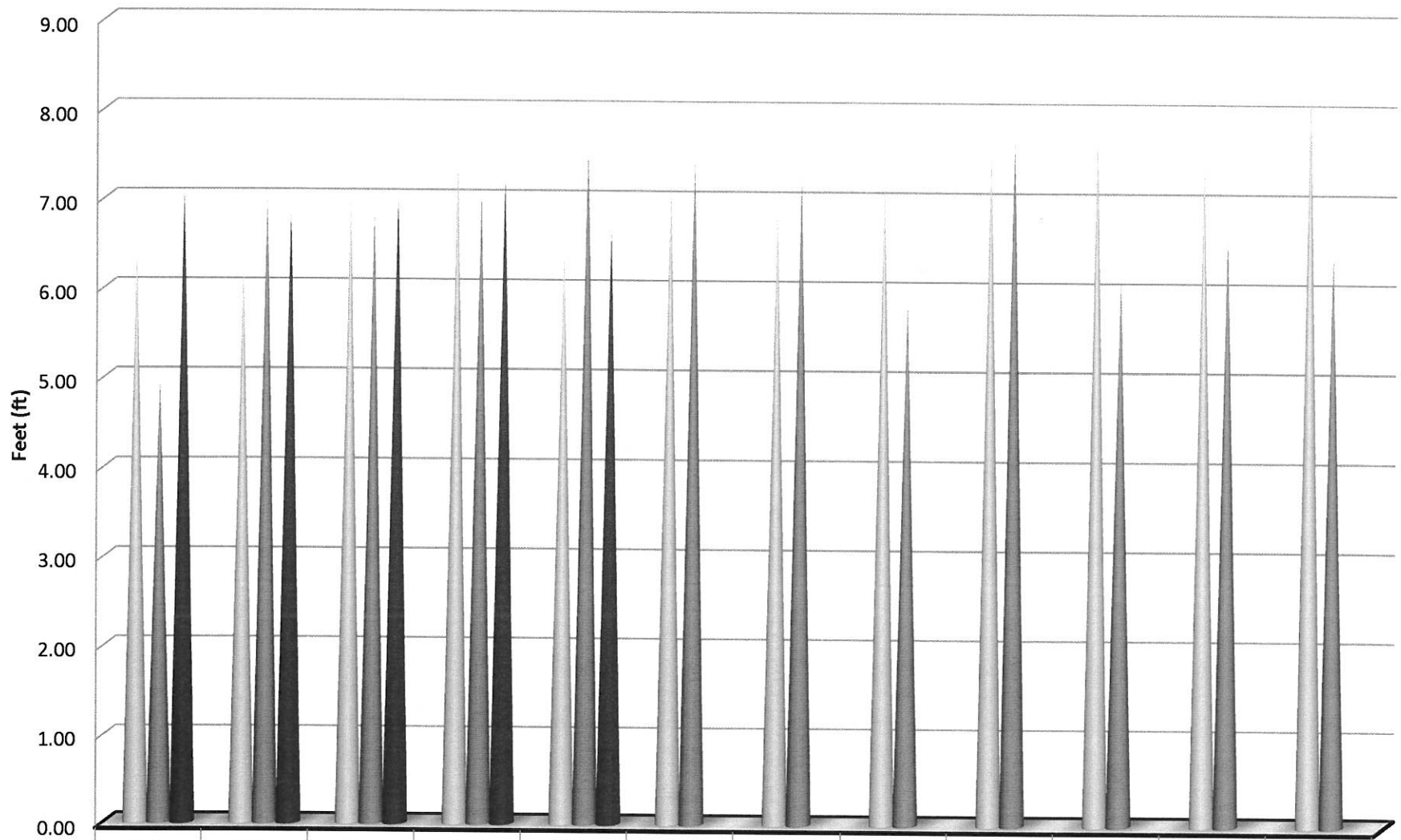
Consumption is billed for a two month period every month.
 Revenue is based on gallons billed - not cash received.
 Production is recorded daily.

8th Street or El Moro Well Static Water Levels



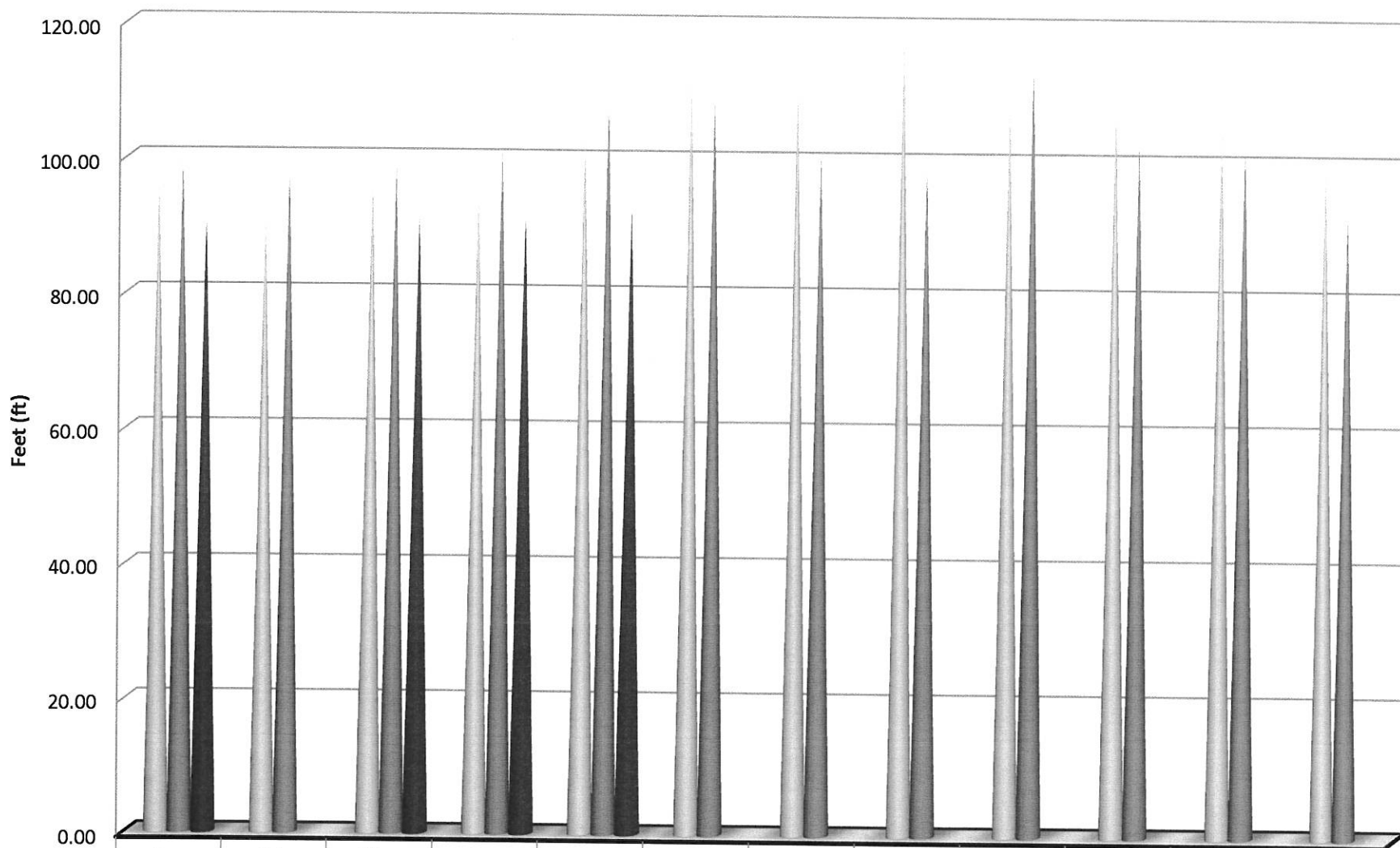
	Jan	Feb	Mar	Apr	May	Jun	Jul	Aug	Sep	Oct	Nov	Dec
2013	28.00	29.80	34.80	32.50	37.20	39.00	39.80	39.80	41.10	41.30	39.50	37.00
2014	34.20	32.50	31.30	35.10	39.40	39.70	41.10	40.70	31.20	34.30	34.90	30.80
2015	31.50	32.00	34.60	36.70	33.20							

3rd Street or Bayside Well Static Water Levels



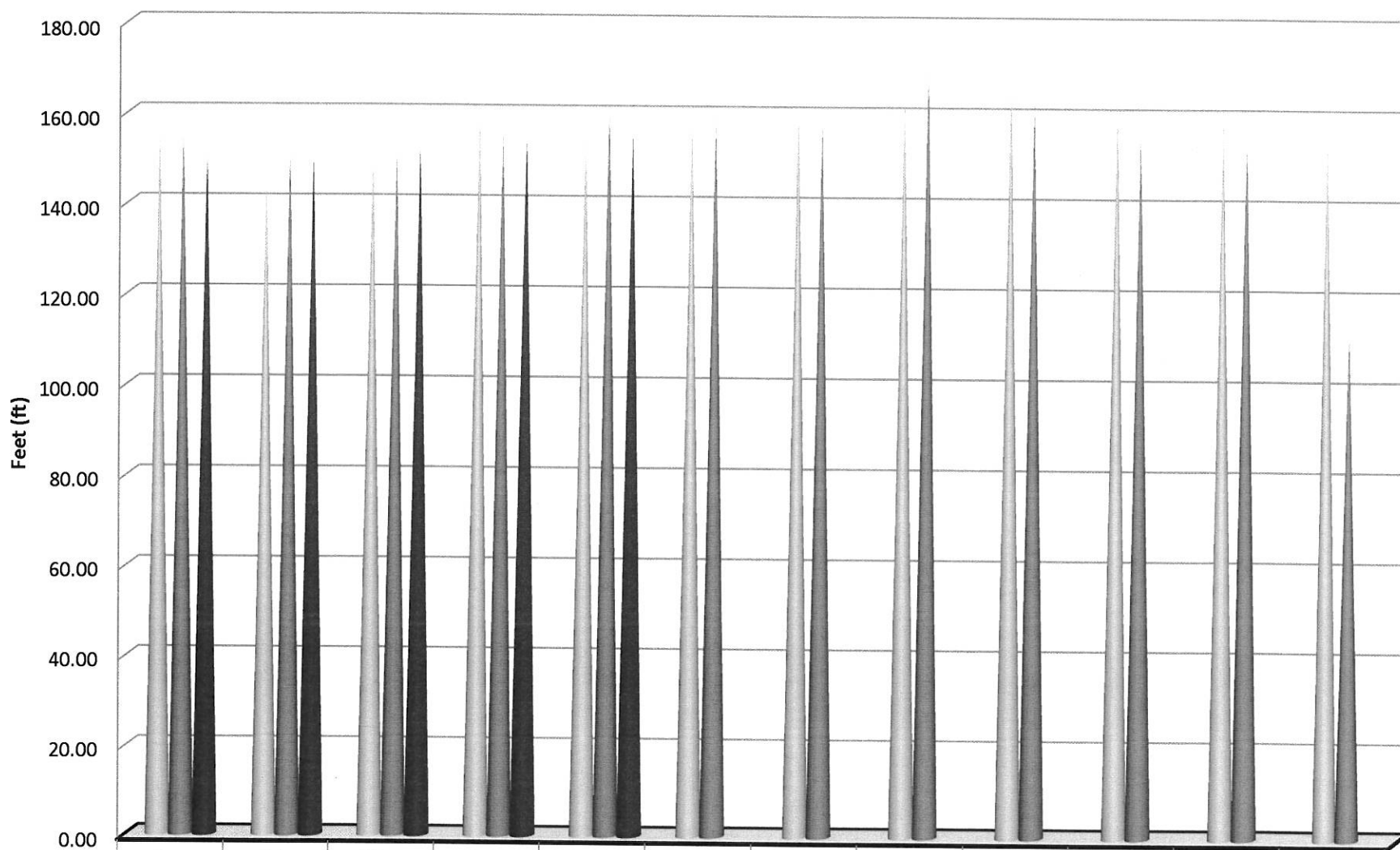
	Jan	Feb	Mar	Apr	May	Jun	Jul	Aug	Sep	Oct	Nov	Dec
2013	6.50	6.30	7.10	7.50	6.50	7.30	7.00	7.30	7.70	7.90	7.50	8.45
2014	5.00	7.10	6.90	7.10	7.70	7.55	7.30	5.90	7.80	6.20	6.70	6.50
2015	7.10	6.90	7.05	7.25	6.70							

Palisades Well Static Water Levels



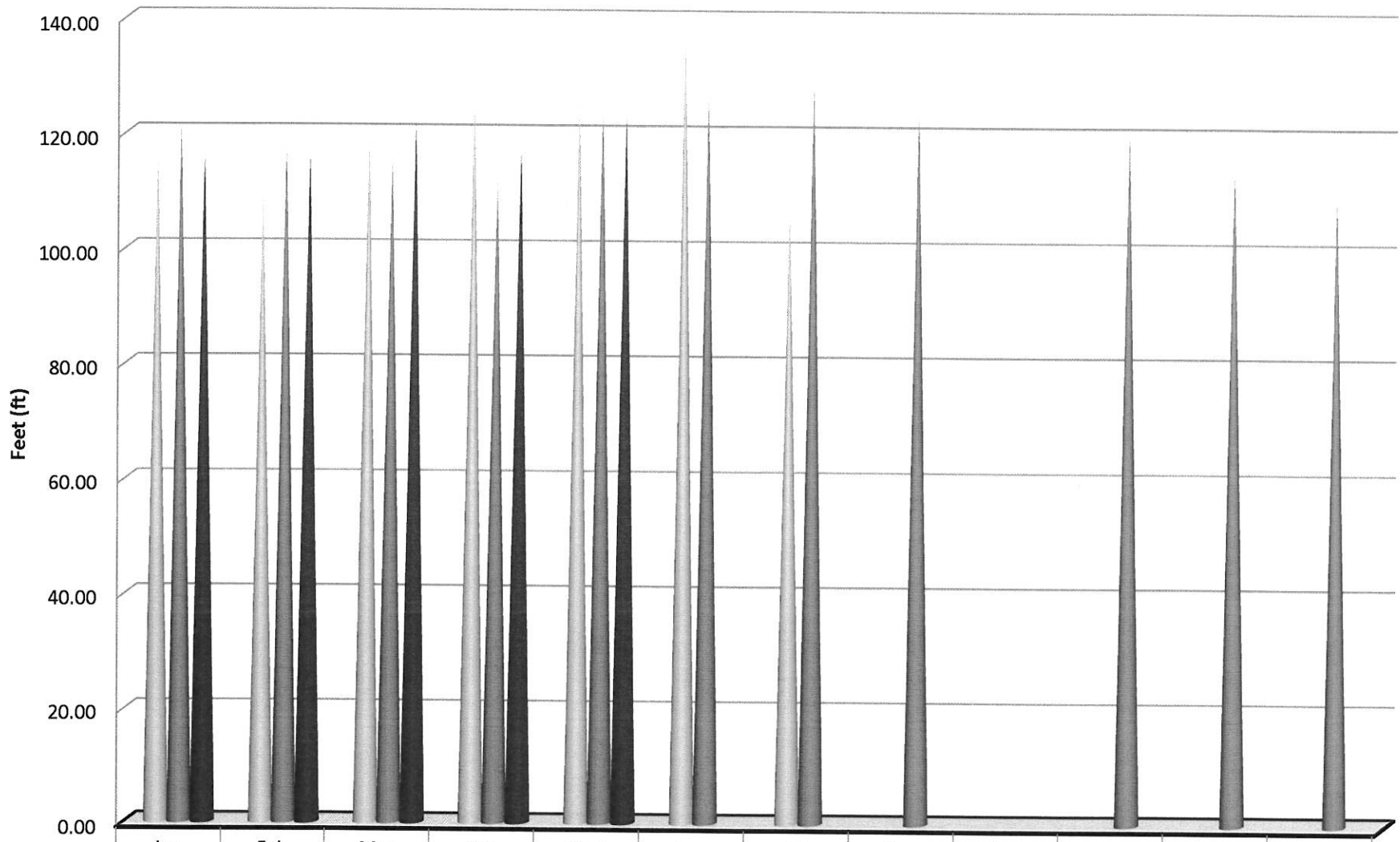
	Jan	Feb	Mar	Apr	May	Jun	Jul	Aug	Sep	Oct	Nov	Dec
2013	97.20	92.30	97.90	96.20	104.90	113.60	112.60	118.70	109.80	109.90	106.50	101.35
2014	100.40	98.60	99.90	102.10	109.85	110.3	101.60	100.05	114.80	103.70	103.60	94.00
2015	91.50		91.50	92.55	93.10							

10th Street Well Static Water Levels



	Jan	Feb	Mar	Apr	May	Jun	Jul	Aug	Sep	Oct	Nov	Dec
2013	157.00	144.90	152.90	161.60	156.80	161.30	163.90	164.80	168.40	164.30	161.20	157.45
2014	156.20	152.40	152.60	156.80	162.90	160.15	159.30	171.30	163.50	156.90	156.70	113.80
2015	151.80	150.70	153.40	156.60	156.65							

South Bay Lower Well Static Water Levels



	Jan	Feb	Mar	Apr	May	Jun	Jul	Aug	Sep	Oct	Nov	Dec
2013	117.25	109.90	121.60	127.60	127.50	139.00	108.60					
2014	122.10	118.90	116.80	112.90	126.00	128.50	129.30	125.60		121.40	116.20	111.30
2015	117.30	116.80	122.50	118.70	124.50							

South Bay Upper Well Static Water Levels

