



May 22, 2015

TO: LOCSD Board of Directors
FROM: Margaret Falkner, Utility Compliance Technician III
SUBJECT: **Agenda Item 9B – 06/04/2015 Board Meeting**
Utilities Department Report for April 2015

MFA

President
R. Michael Wright

Vice President
Marshall E. Ochylski

Directors
Charles L. Cesena
Jon-Erik G. Storm
Louis G. Tornatzky

General Manager
Kathy A. Kivley

District Accountant
Michael L. Doyel

Fire Chief
Robert Lewin

Battalion Chief
Phill Veneris

Mailing Address:
P.O. Box 6064
Los Osos, CA 93412

Offices:
2122 9th Street, Suite 102
Los Osos, CA 93402

Phone: 805/528-9370
FAX: 805/528-9377

www.losososcsd.org

WATER PRODUCTION

The total production for the month of **April 2015** was approximately **14.9 million gallons (MG)** this equates to an average daily demand of 495,203 gallons. This represents a **decrease** in production from last year by approximately **9%**.

Forty-three percent of the service area received bills for approximately **12.4 MG** consumption for the period **March 10, 2015 through May 10, 2015**. This generated **\$120,013** in revenue. This represents a **decrease** in consumption by approximately **12%** and a **decrease** in revenue by approximately **7%** when compared to last year. Graphs and tables are attached.

PRODUCTION AND RUNTIME HOURS BY WELL SITE

Below are two tables that break down the production by well site and the runtime on the pump motor for the month of **April 2015**. Totals for last year are included for comparison:

Production (MG) April	2015	2014
Palisades	0.0000	4.9100
3 rd Street/Bayside	2.8822	3.0607
8 th Street/EI Moro	5.5005	3.7215
10 th Street	5.2141	3.5571
South Bay (lower)	1.1734	1.1049
South Bay (upper)	0.0859	0.0000
TOTAL:	14.8561	16.3542

Runtime (Hours) April	2015	2014
Palisades	0.0	141.6
3 rd Street/Bayside	688.4	695.6
8 th Street/EI Moro	269.8	175.2
10 th St	277.1	190.1
South Bay (lower)	412.2	712.9
South Bay (upper)	385.2	0.0
TOTAL:	2032.7	1915.4

Please refer to the attached April 2015 "Well Log Summaries" for more data regarding chemical usage, soundings, and alarms.

CALIFORNIA STATE OF EMERGENCY DUE TO DROUGHT

We remain officially in a drought.

On April 1, 2015, Governor Brown issued Executive Order B-29-15 due to the prolonged drought. The Save Water section of this order declares, "The State Water Resources Control Board (Water Board) shall impose restrictions to achieve a statewide 25% reduction in potable urban water usage through February 28, 2016. These restrictions will require water suppliers to California's cities and towns to reduce usage as compared to the amount used in 2013. These restrictions should consider the relative per capita water usage of each water suppliers' service area, and require that those areas with high per capita use achieve proportionally greater reductions than those with low use."

WATER CONSERVATION

Customers in the District's water service area are encouraged to stop by the office during lobby hours, 9:00 am until 3:00 pm, and pick up water conservation fixtures. We have 1.5 gallons per minute (gpm) high efficiency showerhead with on/off valve, a 5-minute shower timer, 1.5 gpm kitchen sink swivel aerator, packets of leak detection dye tablets for toilet tanks, a drip gauge cylinder to measure small drips, and a water saving garden hose nozzle.

INTEGRATED REGIONAL WATER MANAGEMENT (IRWM) PLAN GRANT APPLICATION

The Los Osos Community Services District has projects listed on the County of San Luis Obispo's IRWM Plan. The District's 8th Street Upper Aquifer Well project has been moving forward with environmental documents. Your board just approved the Mitigated Negative Declaration at the May 7, 2015 meeting. District staff participated in a subcommittee of the Regional Water Management Group to evaluate projects to submit for the final round of Proposition 84 funding for the IRWM. The District's 8th Street project was ineligible in this round due to the lack of an approved Groundwater Management Plan prior to January 1, 2015.

OTHER GRANT AND LOAN OPPORTUNITIES

There are grant opportunities through Proposition 1, Groundwater Sustainability Program, the District will apply for in the next year. The final guidelines will be released in August 2016 with the solicitation in Fall/Winter 2016/17. Staff is researching more opportunities through Propositions 1, 81, 84, and 50.

The Clean Water State Revolving Fund (CWSRF) program offers low cost financing for a wide variety of water quality projects. Due to the fact that our District defaulted on a State Revolving Fund Loan for the previous Los Osos Wastewater Project, staff is doubtful we will receive funding with SRF money. After the Bankruptcy filing in August 2006, the Utilities Department was able to petition the California Infrastructure and Economic Development Bank (CIEDB) to retain our \$5 million Infrastructure SRF loan for water system improvements. The District was notified that a default had occurred because of the bankruptcy filing but, the CIEDB did not declare the water loan in default. This is in part due to the fact an enterprise fund's revenues are designated to be used to fund projects financed through user charges in the same fund. The District continues to budget for repayment of this loan every year.

There are other loan sources through the State Water Resource Control Board (SWRCB), Rural Community Assistance Corporation (RCAC) and United States Department of Agriculture (USDA). Since loans may not be an option, staff will continue financing our capital improvement projects on a pay-as-you-go basis. Staff also will look at other grant opportunities that are not as competitive.

DRAINAGE WDID # 3 40M2000133

The District complies with the General National Pollutant Discharge Elimination System (NPDES) Permit for storm water discharges for small Municipal Separate Storm Sewer Systems (MS4). Under this permit, all Community Services Districts are considered "Non-traditional" MS4s. District staff is working with District Engineering and Water Board staff to make sure we meet compliance. Being a member of the Central Coast Partners for Water Quality reduces costs for outreach by sharing among the participating members. Below is a picture of the Central Coast Partners Logo.



Rain measured at our water operations facility between January 1st & December 31st.

Year (Calendar)	Inches
2012	9.56
2013	3.12
2014	12.51

BAYRIDGE ESTATES WDID# 3 401027001

Crews continue monitoring and grounds keeping at this facility. There is an item on this agenda for phase 1 work required in the system prior to hookup to the County's wastewater project. Once connected to the Los Osos Wastewater Project, the District crews will no longer maintain the septic system. Prior to connection there will be projects to be completed for County acceptance of the system.

VISTA DE ORO WDID# 3 401024001

Crews continue monitoring and grounds keeping at this facility. Once connected to the Los Osos Wastewater Project, the District crews will no longer maintain the septic system. Prior to connection there will be projects to be completed for County acceptance of the system.

RECOMMENDATION

Staff encourages the Board to ask any questions they may have with regard to the aforementioned report or any other related item that may be listed separately as an agenda item.

Attachments

APRIL 2015	8th St./ EI Moro Well	3rd St./ Bayside Well	10th St. Well	South Bay Well	South Bay Upper Well	Palisades Well	All Wells TOTAL	Last Years TOTAL	Percent% Differential
Total Gallons Produced, Mgal	5.5005	2.8822	5.2141	1.1734	0.0859	0.0000	14.8561	16.3542	-9.16%
Average Daily Flow, Mgal							0.4952		
Total Gallons to Waste (Filter Backwash), Mgal	0.0414			0.0000	0.0000		0.0414	0	
Total Gallons to Waste (System Flushing), Mgal							0.0000	0	
Distribution System Losses (Water Line Breaks), Mgal							0.0000	0.002	
Total Gallons Adjusted, Mgal	5.4591			1.1734			14.8147	16.3522	-9.40%
Pump Runtime, total hours	269.8	688.4	277.1	412.2	385.2	0.0	2032.7	1915.4	5.77%
Daily Avg. Runtime, hours/day	9.0	22.9	9.2	13.7	12.8	0.0			
Energy Used, kWatts	10492	5471	11443	7409		0	34815	39976	-12.91%
Eff. Ratio, kWatts/hr	38.89	7.95	41.30	17.97		0.00			
Chlorine Used, total gallons	63.7	28.1	30.8	26.0		0.0	148.5	130.3	13.99%
Aqua Mag, pounds	103.8		47.8	0.0		0.0	151.6	128	18.44%
Static water level, ft.	36.70	7.25	156.60	118.70	92.60	92.55			
Pump water level, ft.	140.90	52.10	246.00	0.00	96.55	0.00	Palisades Well out of service		
Draw-down level, ft.	104.20	44.85	89.40	0.00	3.95	0.00			
Gallons per minute	346	71	331	0	30	0			
Pressure, psi	92	84	39	0	57	0			
Alarm Events									
YES / NO	YES	NO	NO	YES	NO	YES			
Type of event									
Well Failure							0		
Power Failure							0		
Low Chlorine	1						1		
Other:	2			1		2	5		
Total number alarms	3	0	0	1	0	2	6	0	600.00%

Well Log Summaries

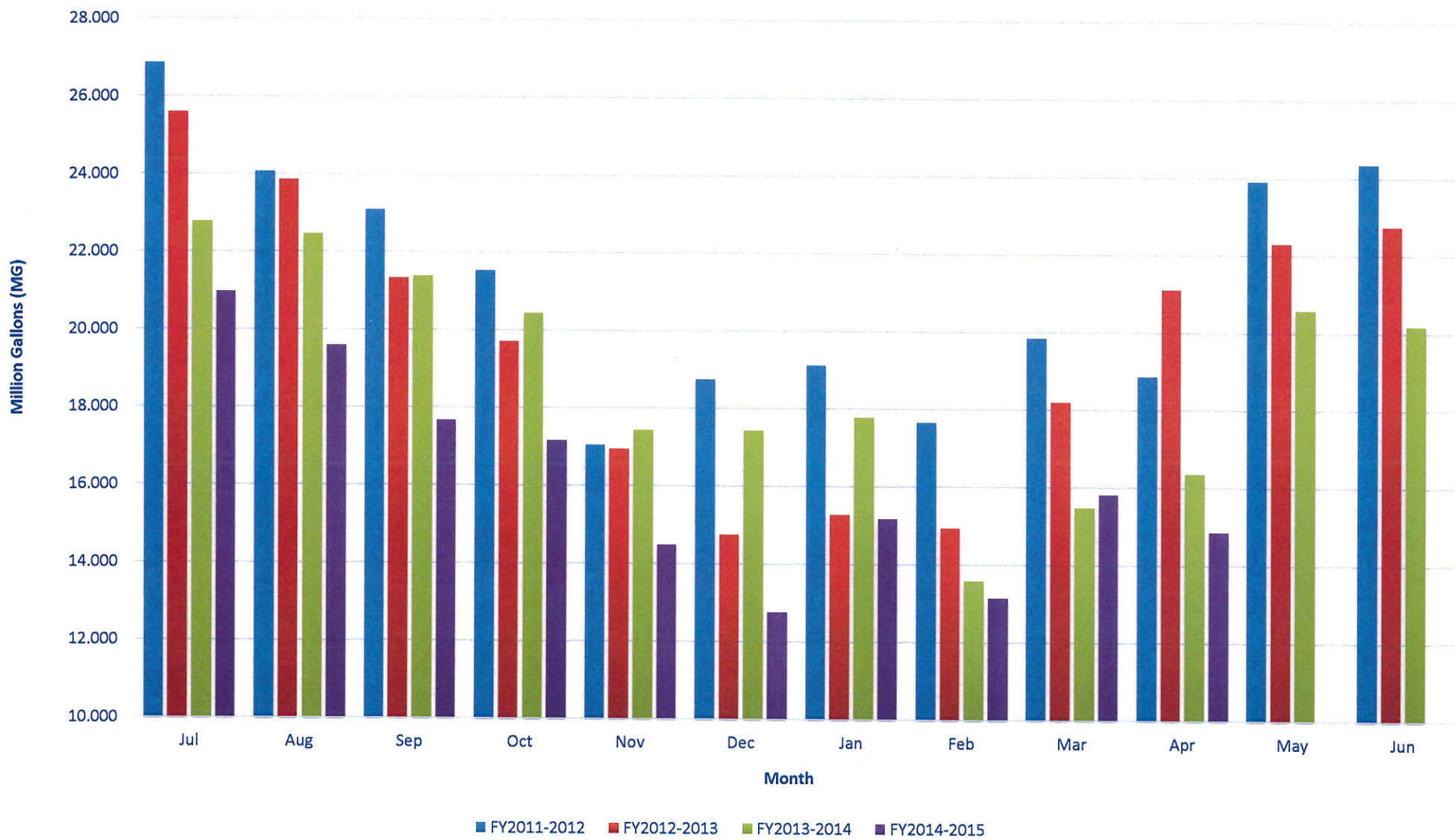
LOCSD Water Data

Water Production Data in Million Gallons

	FY 11-12	FY 12-13	FY 13-14	FY 14-15
Jul	26.868	25.600	22.779	20.979
Aug	24.064	23.862	22.470	19.593
Sep	23.086	21.340	21.380	17.668
Oct	21.543	19.708	20.431	17.169
Nov	17.046	16.939	17.436	14.482
Dec	18.745	14.747	17.431	12.759
Jan	19.117	15.268	17.780	15.174
Feb	17.662	14.940	13.584	13.142
Mar	19.843	18.193	15.476	15.807
Apr	18.873	21.118	16.354	14.856
May	23.914	22.310	20.591	
Jun	24.347	22.743	20.179	
TOTAL	255.107	236.767	225.890	161.630

Consumption is billed for a two month period every month.
Revenue is based on gallons billed - not cash received.
Production is recorded daily.

Historical to Present LOCSD Well Production Data

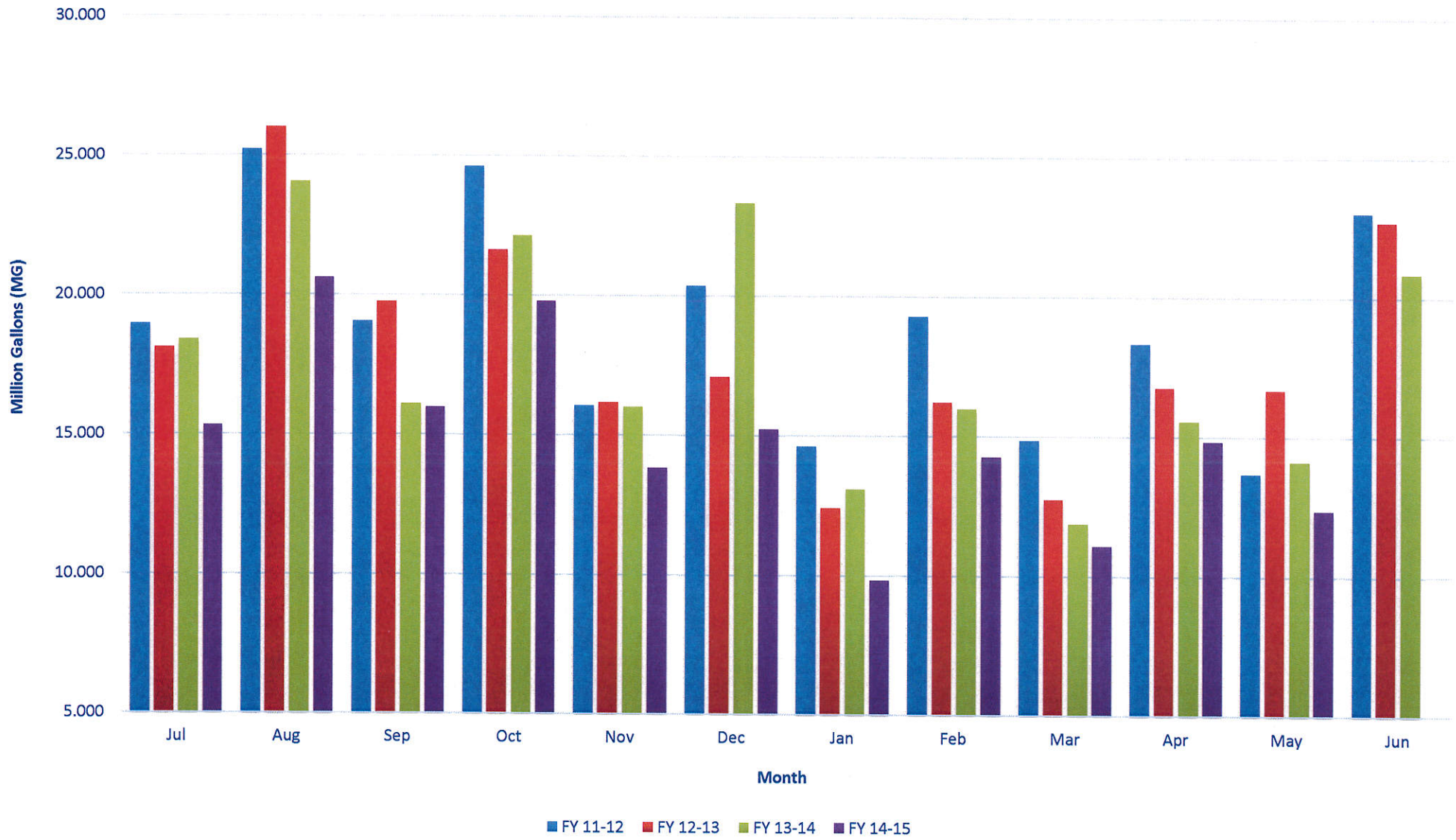


LOCSD Water Data

Water Consumption Data in Million Gallons						
% of Service Area	Billing Period		FY 11-12	FY 12-13	FY 13-14	FY 14-15
43	5/11 to 7/10	Jul	18.950	18.110	18.402	15.330
57	6/11 to 8/10	Aug	25.210	26.006	24.061	20.627
43	7/11 to 9/10	Sep	19.044	19.748	16.087	15.989
57	8/11 to 10/10	Oct	24.636	21.617	22.142	19.804
43	9/11 to 11/10	Nov	16.048	16.155	15.994	13.830
57	10/11 to 12/10	Dec	20.355	17.096	23.342	15.236
43	11/11 to 1/10	Jan	14.623	12.406	13.105	9.828
57	12/11 to 2/10	Feb	19.294	16.223	15.969	14.276
43	1/11 to 3/10	Mar	14.858	12.737	11.886	11.079
57	2/11 to 4/10	Apr	18.313	16.756	15.559	14.829
43	3/11 to 5/10	May	13.685	16.686	14.131	12.367
57	4/11 to 6/10	Jun	23.029	22.709	20.852	
		TOTAL	228.044	216.249	211.530	163.195

Consumption is billed for a two month period every month.
 Revenue is based on gallons billed - not cash received.
 Production is recorded daily.

Historical to Present LOCSD Water Consumption

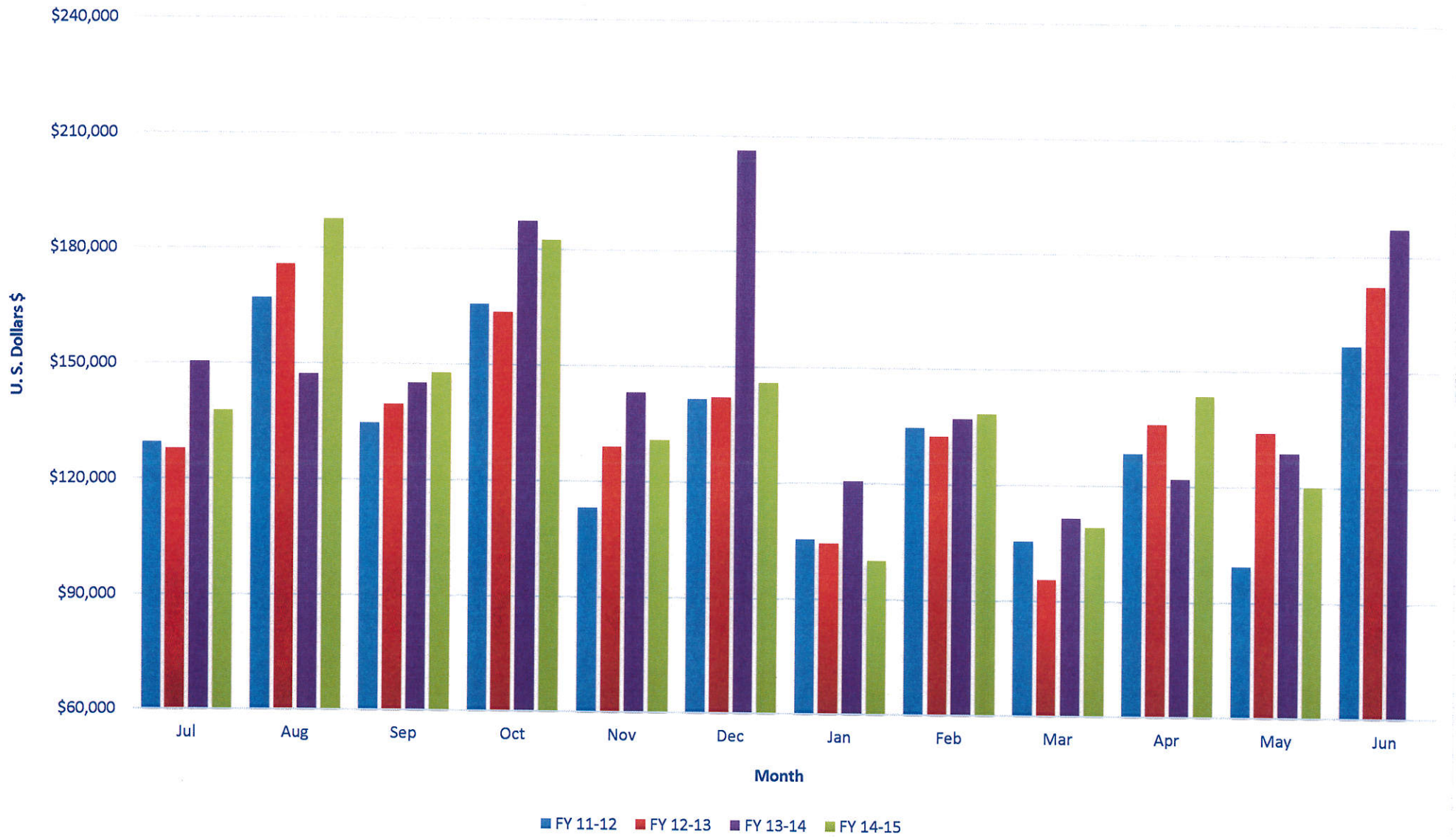


LOCSD Water Data

Water Revenue Data						
% of Service Area	Billing Period		FY 11-12	FY 12-13	FY 13-14	FY 14-15
43	5/11 to 7/10	Jul	\$129,524.46	\$127,737.70	\$150,401.90	\$137,752.98
57	6/11 to 8/10	Aug	\$167,062.07	\$175,798.70	\$147,246.54	\$187,468.02
43	7/11 to 9/10	Sep	\$134,650.62	\$139,628.43	\$145,135.28	\$147,808.06
57	8/11 to 10/10	Oct	\$165,624.63	\$163,698.98	\$187,431.78	\$182,463.96
43	9/11 to 11/10	Nov	\$113,044.46	\$128,918.55	\$143,029.03	\$130,772.31
57	10/11 to 12/10	Dec	\$141,492.06	\$142,026.32	\$206,187.91	\$145,977.27
43	11/11 to 1/10	Jan	\$105,371.44	\$104,328.08	\$120,500.40	\$99,970.19
57	12/11 to 2/10	Feb	\$134,692.14	\$132,433.64	\$137,045.65	\$138,344.52
43	1/11 to 3/10	Mar	\$105,313.67	\$95,487.96	\$111,475.31	\$109,092.25
57	2/11 to 4/10	Apr	\$128,368.97	\$135,947.81	\$121,943.68	\$143,355.32
43	3/11 to 5/10	May	\$99,287.66	\$133,939.00	\$128,784.61	\$120,013.25
57	4/11 to 6/10	Jun	\$156,744.35	\$172,139.37	\$187,230.13	
		TOTAL	\$1,581,176.53	\$1,652,084.54	\$1,786,412.22	\$1,543,018.13

Consumption is billed for a two month period every month.
 Revenue is based on gallons billed - not cash received.
 Production is recorded daily.

Historical to Present LOCSD Water Revenue



South Bay Upper Well Static Water Levels

